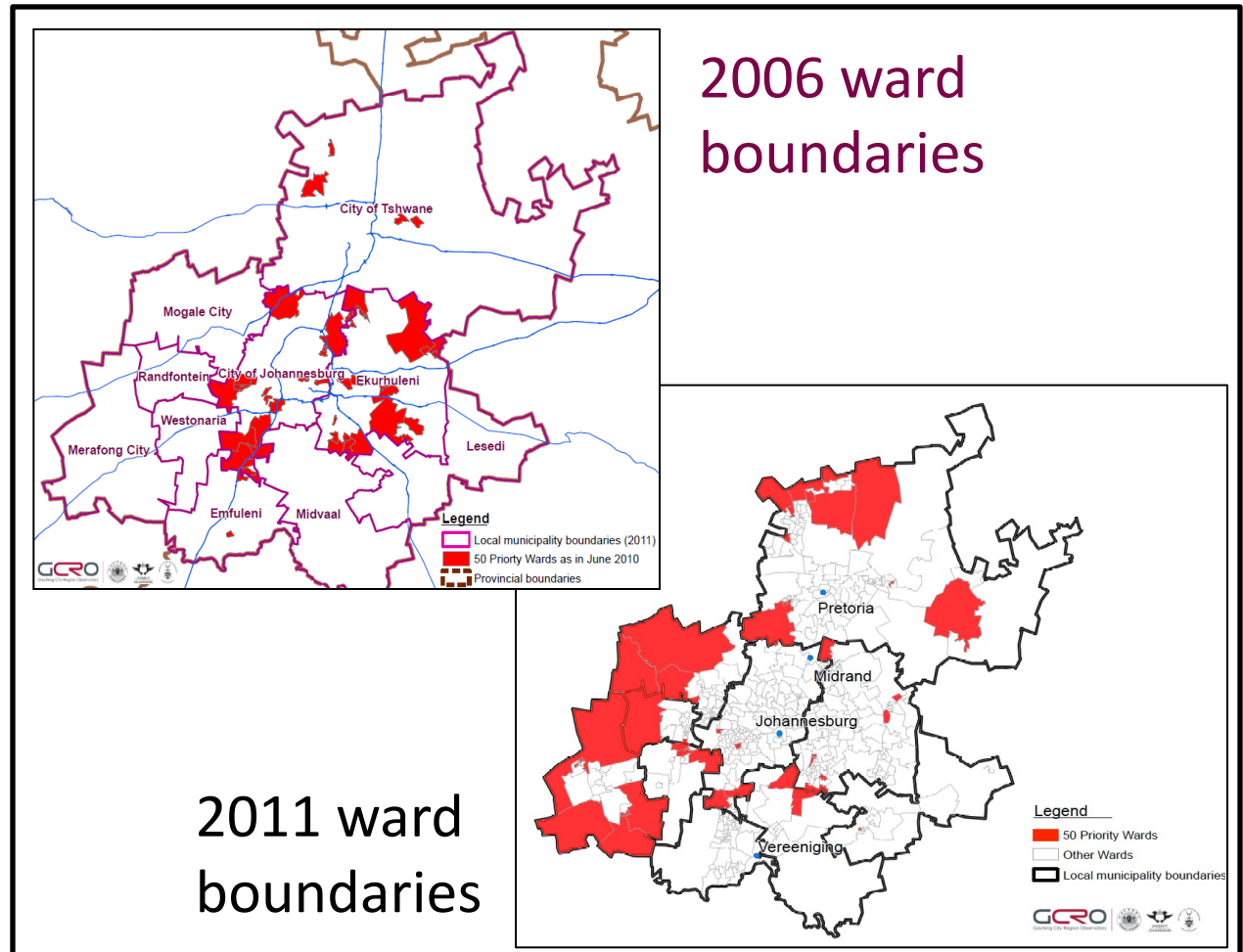


# Selecting 50 Priority Wards in Gauteng

*Indicative mapping and decision support tool for the Gauteng Planning Commission:  
Presentation to the RAC on 25 July based on work done during Jan – April 2011*

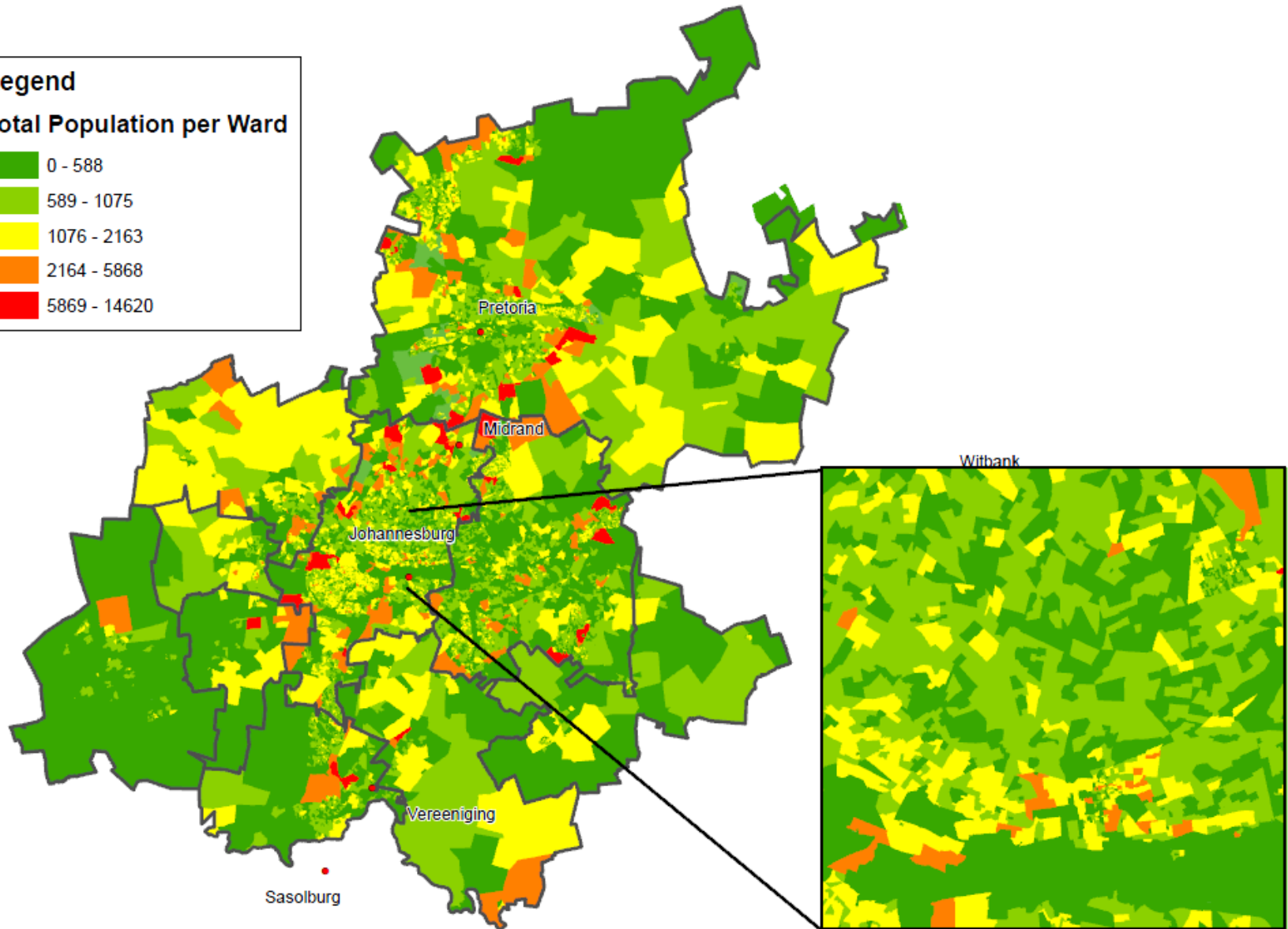
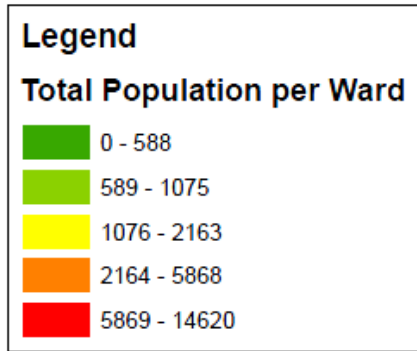


**GCRG**  
Gauteng City-Region Observatory



# Ward boundaries vs. population numbers

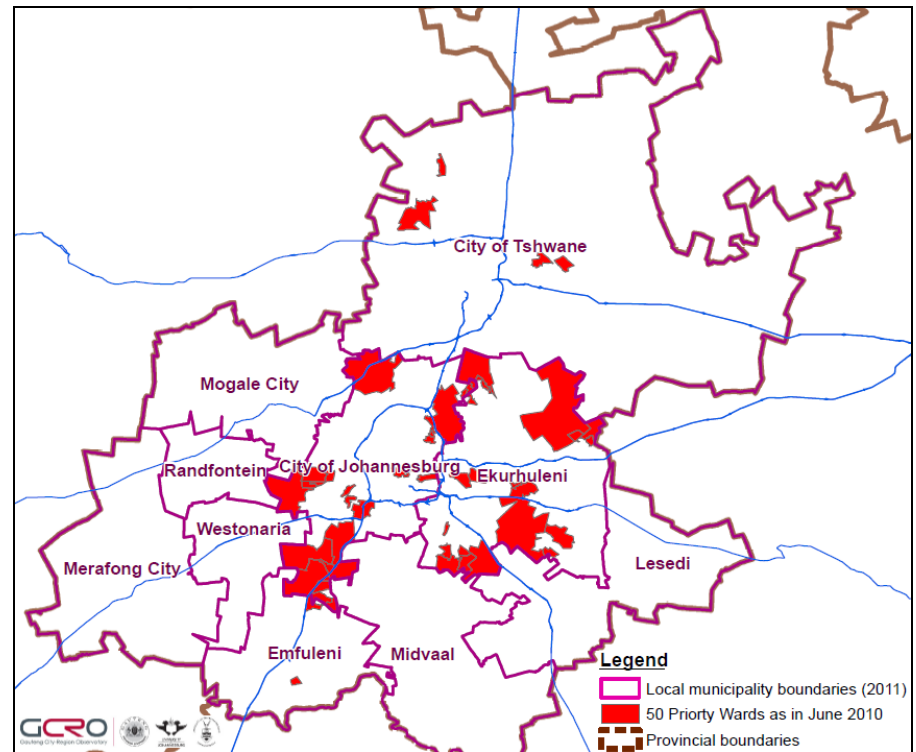
*Large wards have distributed population*



# 2006 vs. 2011 wards

*Ward boundaries have changed significantly*

- The “50 Poorest Wards” were selected by GPG based on 2006 wards.

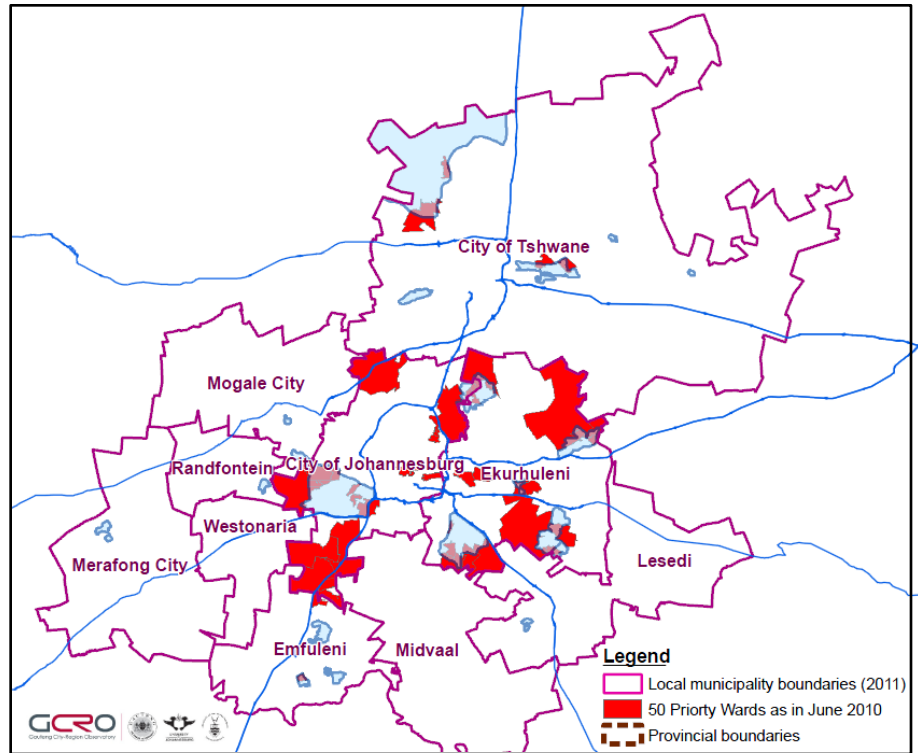


The 50 Poorest Wards based on 2006 ward boundaries

# 2006 vs. 2011 wards

*Ward boundaries have changed significantly*

- The “50 Poorest Wards” were selected by GPG based on 2006 wards.

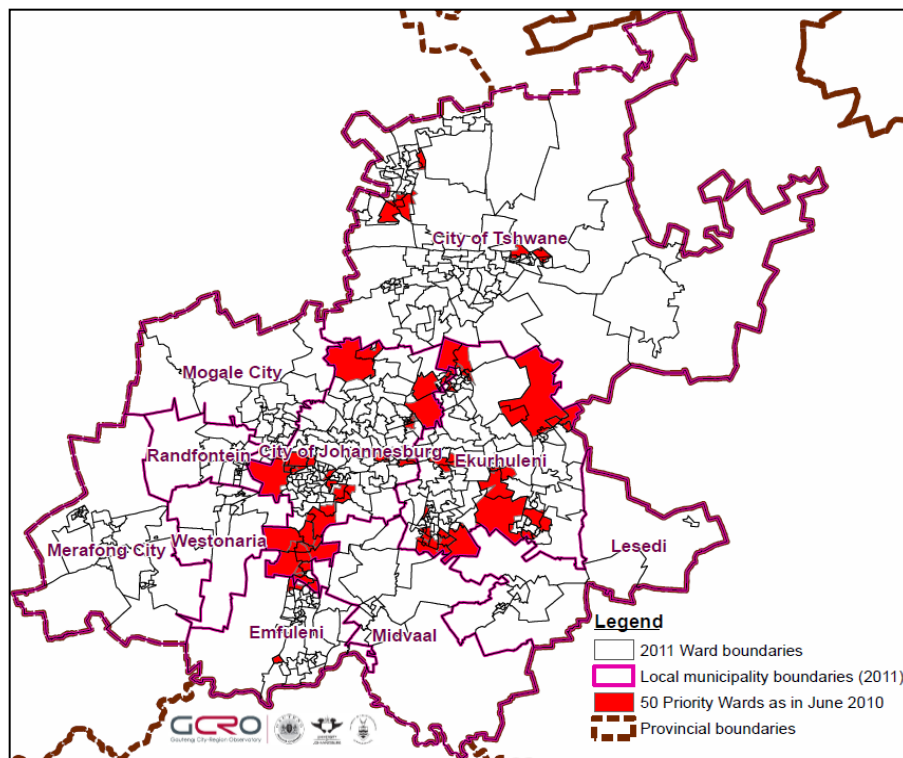


The 50 Poorest Wards based on 2006 ward boundaries  
with 20 Priority Townships

# 2006 vs. 2011 wards

*Ward boundaries have changed significantly*

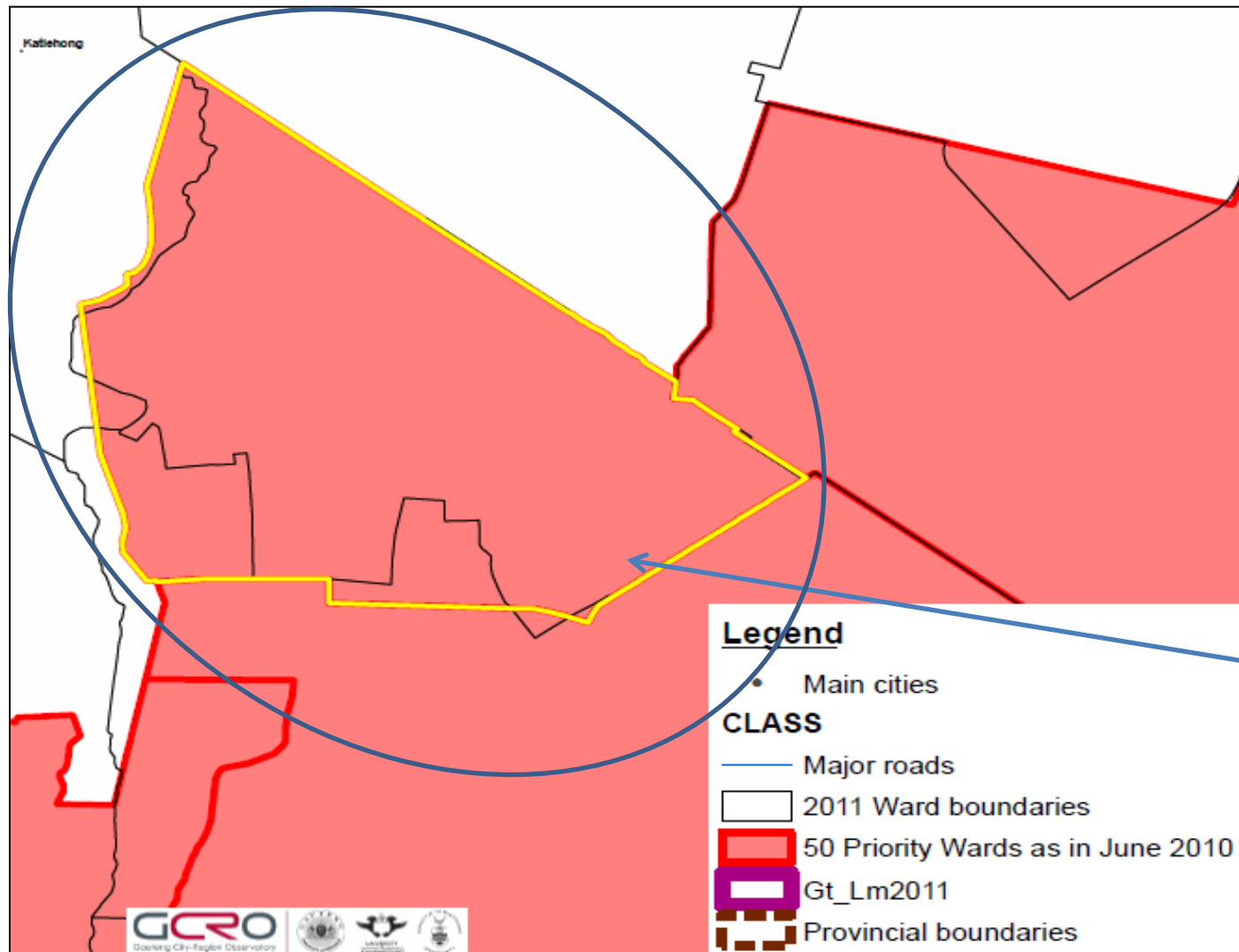
- The existing 50 Priority Wards were selected by GPG based on 2006 wards.
- New ward boundaries were defined by the Demarcation Board in preparation for the May 2011 local elections.
- Ward boundaries have changed significantly from the wards delimited for the 2006 local government elections. The number of wards has also increased: there are now 508 wards in Gauteng, substantially more than before.
- This analysis applies data and indicators to the new 2011 ward boundaries, to arrive at a *possible* new set of 50 Priority Wards.



The 50 Poorest Wards overlaid by  
2011 ward boundaries

# 2006 vs. 2011 wards

Can a selection be made to select “more-or-less” the same wards?

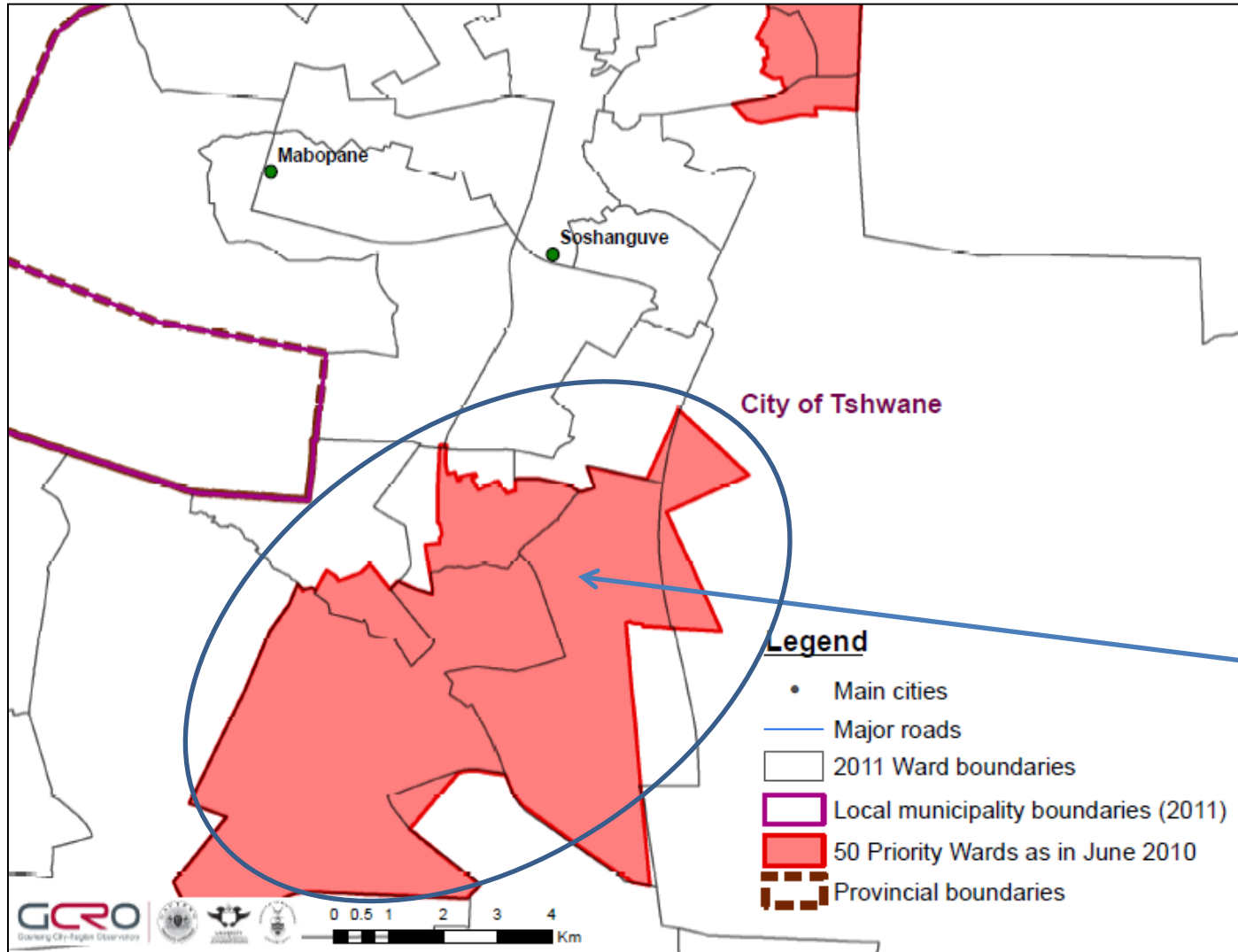


The yellow boundary shows the old Priority Ward; the black boundary the new ward.

Sometimes there is a rough correspondence between old and new

# 2006 vs. 2011 wards

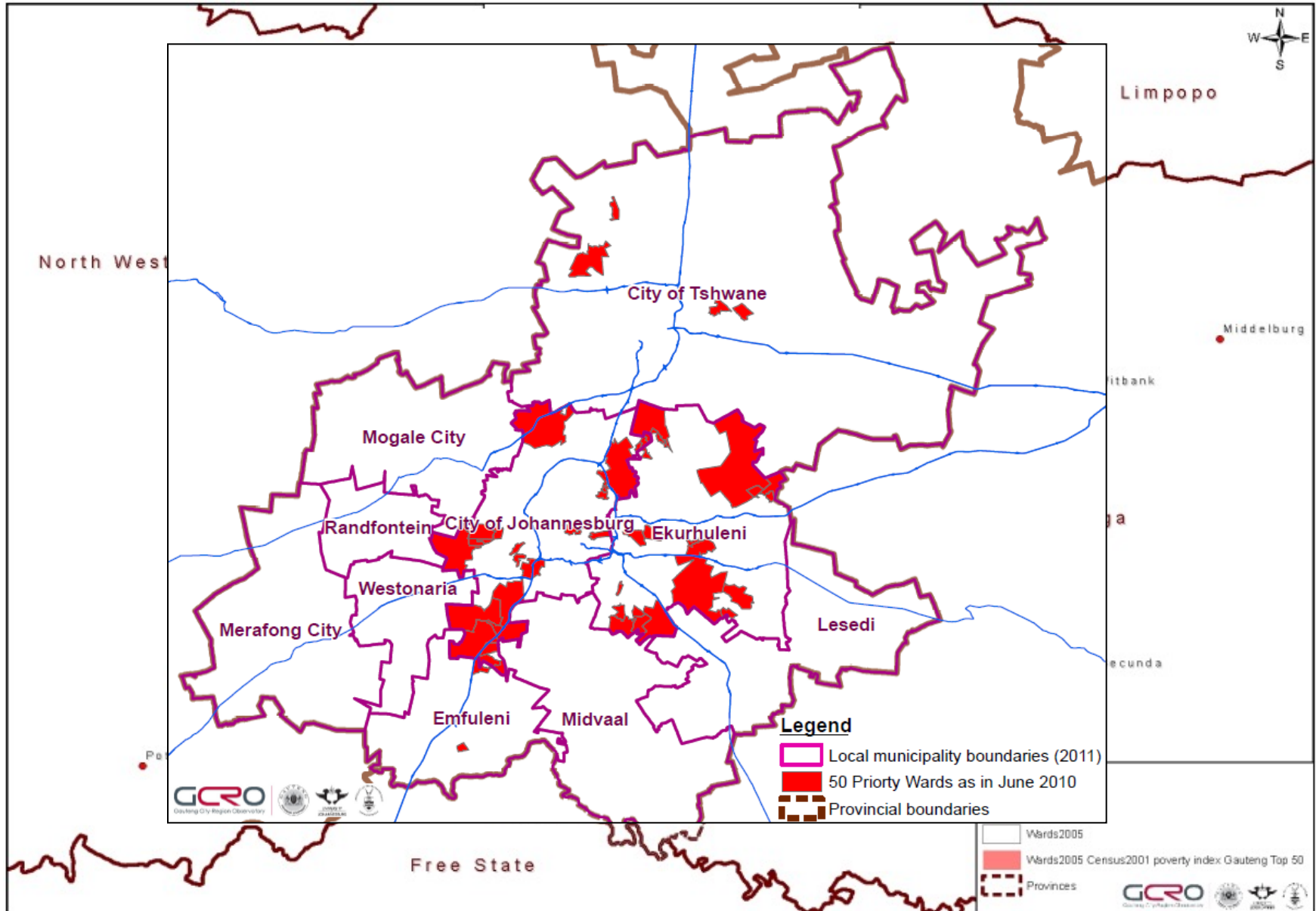
Examples of differences



One of the existing 50 Priority Wards now divided into multiple wards by new boundaries

# Indicators used and mapped per ward

*According to data availability, accuracy and currency*





# Indicators used and mapped per ward

*18 Indicators: according to data availability, accuracy and currency*

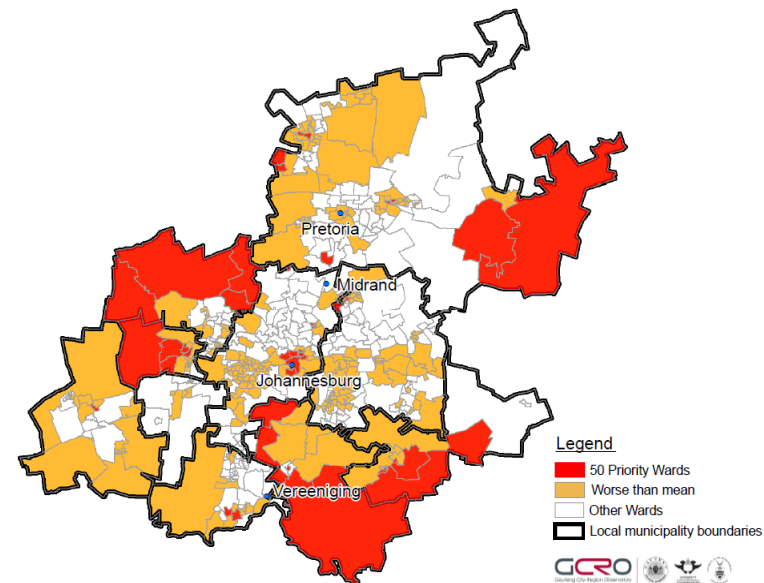
1. % of adults receiving social grants
2. % of adults that are economically active
3. Unemployment rate (% unemployment)
4. Average household income (in Rands)
5. % of the area of each ward that is covered by informal housing
6. % of households without access to dwellings suitable by RDP standards
7. % of households without access to drinking water by RDP standards
8. % of households without access to sanitation by RDP standards
9. % of households without access to electricity for lighting by RDP standards
10. % of households without access to electricity for cooking by RDP standards
11. % of dwellings that are further than 5km from a primary health care facility
12. Household density per square kilometre
13. % of households that are female headed
14. % of households that are child headed
15. % of individuals with one or more disabilities
16. % of population aged 0-18 that is further than 3km from any public school
17. % of population aged 7-14 not attending school
18. % of populated areas overlaying dolomite

# Indicators mapped per ward

*According to data availability, accuracy and currency*

## 1. % of adults receiving social grants

50<sup>th</sup> ward: 24.6%  
Mean: 19.4%

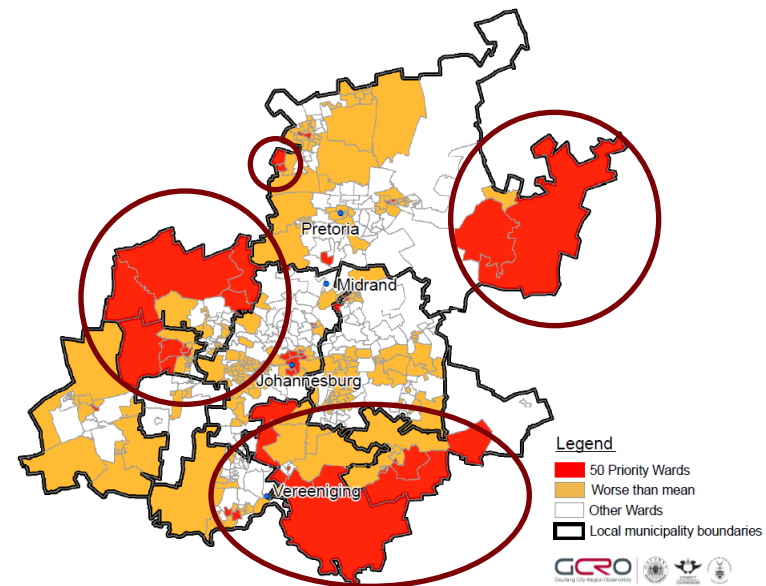


# Indicators mapped per ward

*According to data availability, accuracy and currency*

## 1. % of adults receiving social grants

50<sup>th</sup> ward: 24.6%  
Mean: 19.47%

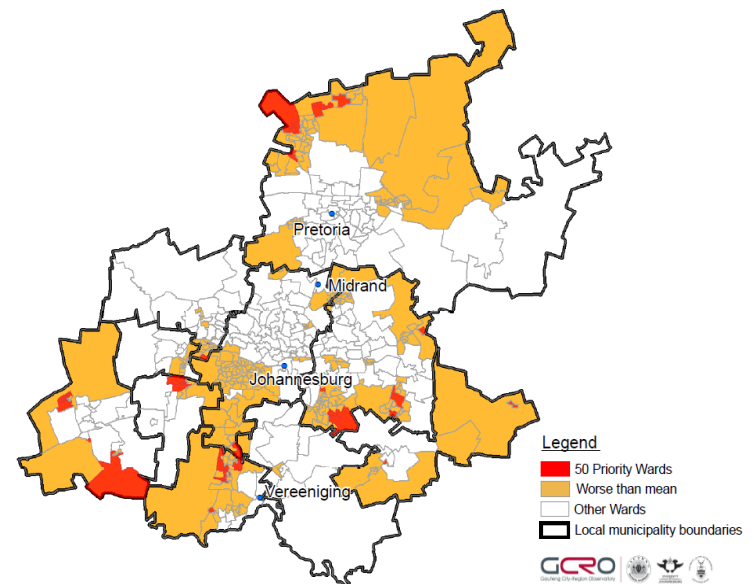


# Indicators mapped per ward

*According to data availability, accuracy and currency*

1. % of adults receiving social grants
2. % of adults that are economically active

50<sup>th</sup> ward: 31.6%  
Mean: 48.5%

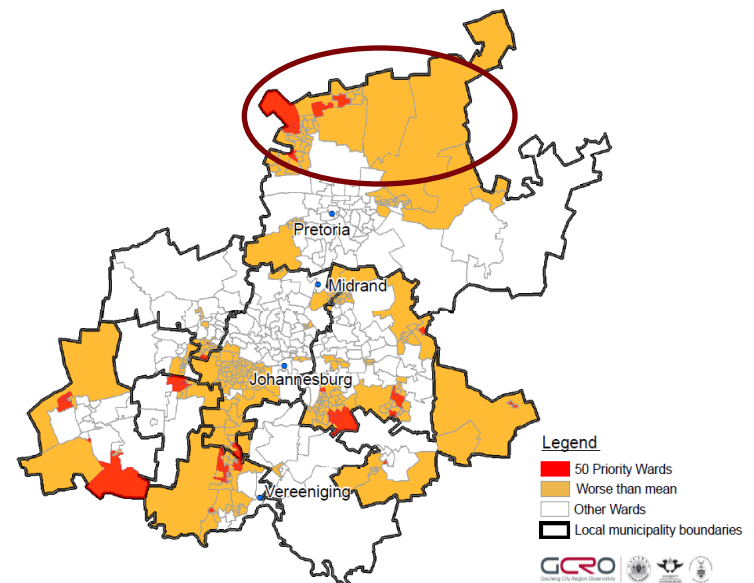


# Indicators mapped per ward

*According to data availability, accuracy and currency*

1. % of adults receiving social grants
2. % of adults that are economically active

50<sup>th</sup> ward: 31.6%  
Mean: 48.5%

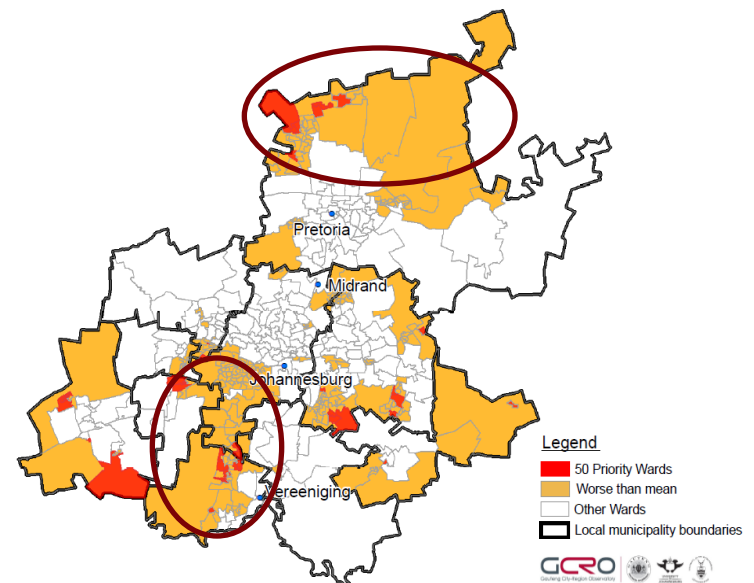


# Indicators mapped per ward

*According to data availability, accuracy and currency*

1. % of adults receiving social grants
2. % of adults that are economically active

50<sup>th</sup> ward: 31.6%  
Mean: 48.5%

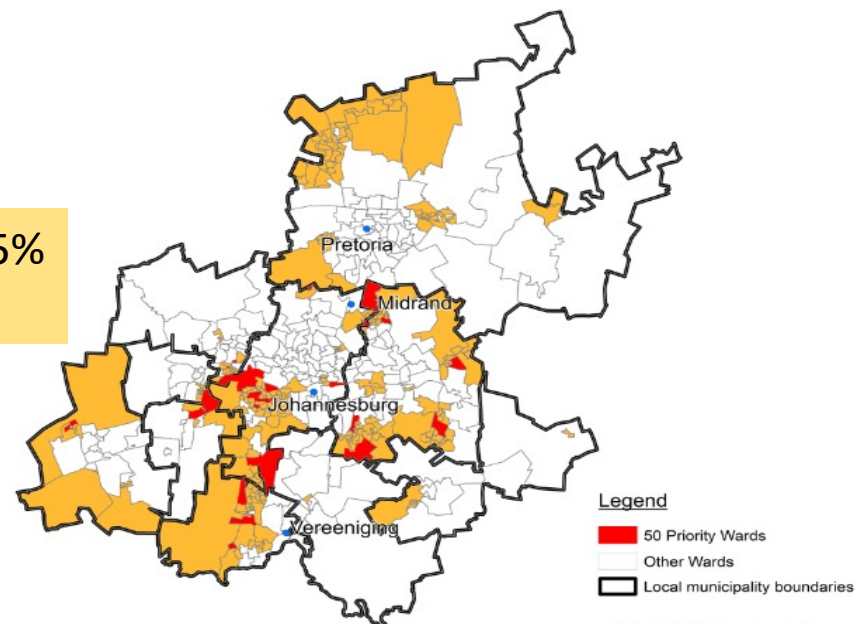


# Indicators mapped per ward

*According to data availability, accuracy and currency*

1. % of adults receiving social grants
2. % of adults that are economically active
3. % Unemployment

50<sup>th</sup> ward: 48.5%  
Mean: 30.6%



## Legend

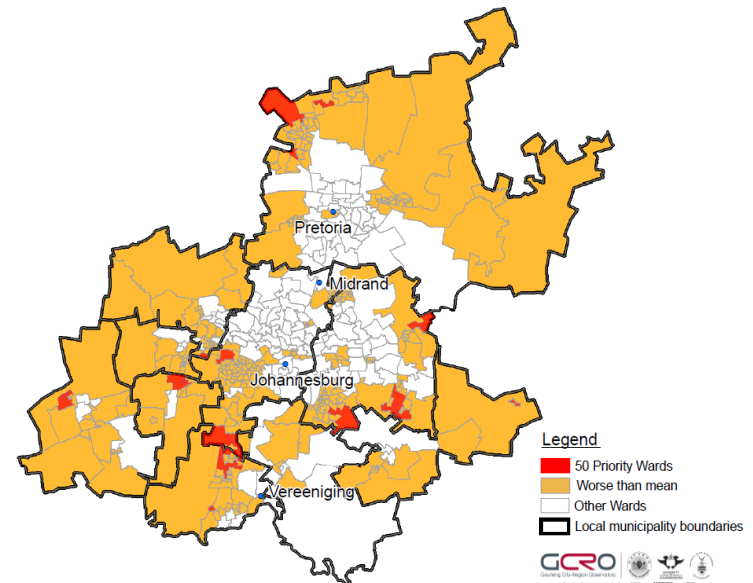
- 50 Priority Wards
- Other Wards
- Local municipality boundaries

# Indicators mapped per ward

*According to data availability, accuracy and currency*

1. % of adults receiving social grants
2. % of adults that are economically active
3. % Unemployment
4. Average household income (in Rands)

50<sup>th</sup> ward: R2 556  
Mean: R11 886



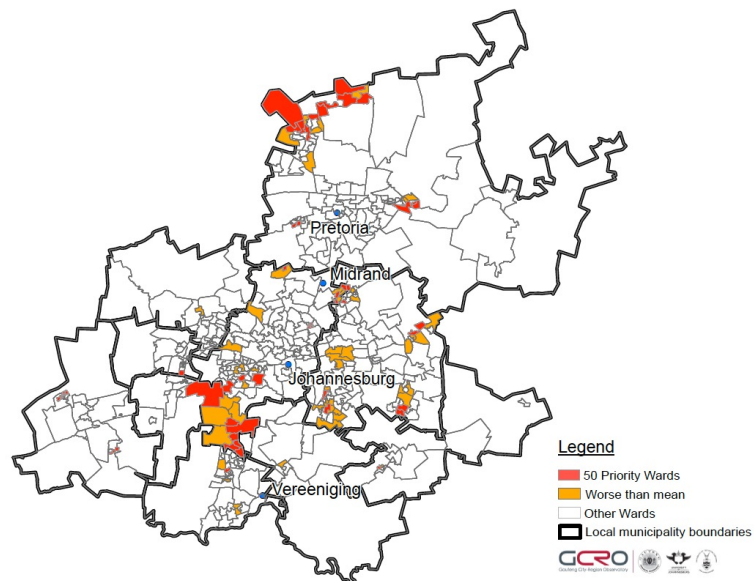


# Indicators mapped per ward

*According to data availability, accuracy and currency*

1. % of adults receiving social grants
2. % of adults that are economically active
3. % Unemployment
4. Average household income (in Rands)
5. % of the area of each ward that is covered by informal settlements

50<sup>th</sup> ward: 12.2%  
Mean: 4%

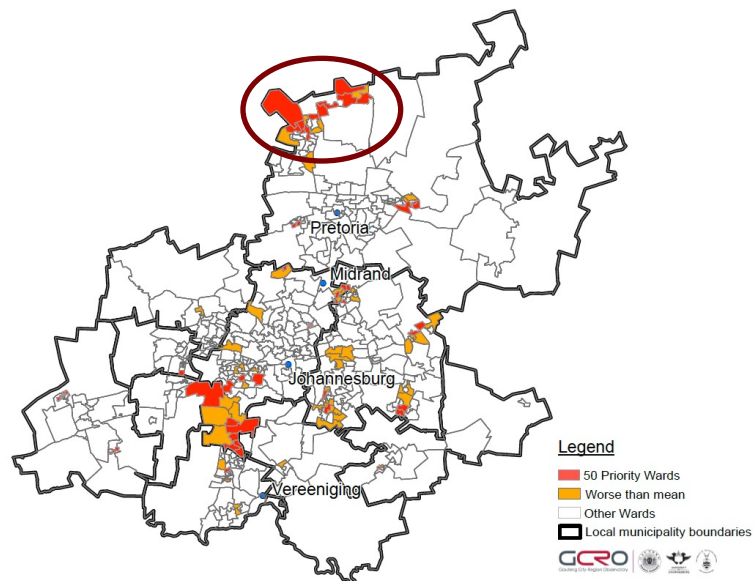


# Indicators mapped per ward

*According to data availability, accuracy and currency*

1. % of adults receiving social grants
2. % of adults that are economically active
3. % Unemployment
4. Average household income (in Rands)
5. % of the area of each ward that is covered by informal settlements

50<sup>th</sup> ward: 12.2%  
Mean: 4%

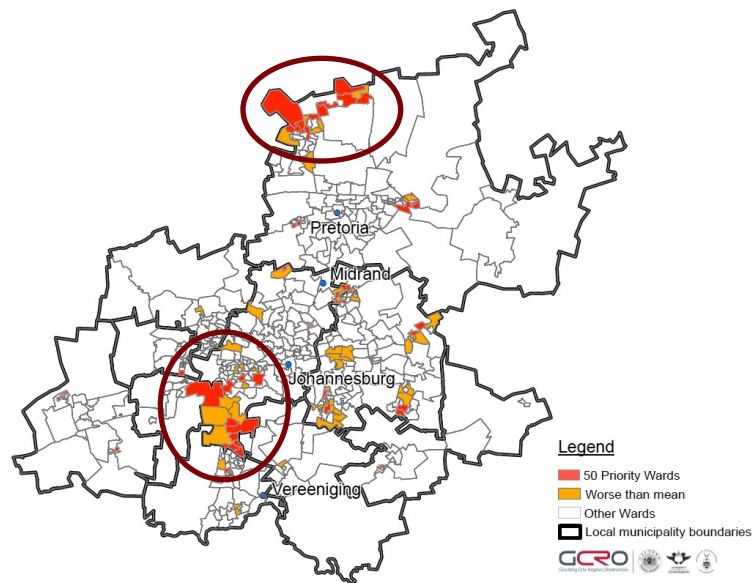


# Indicators mapped per ward

*According to data availability, accuracy and currency*

1. % of adults receiving social grants
2. % of adults that are economically active
3. % Unemployment
4. Average household income (in Rands)
5. % of the area of each ward that is covered by informal settlements

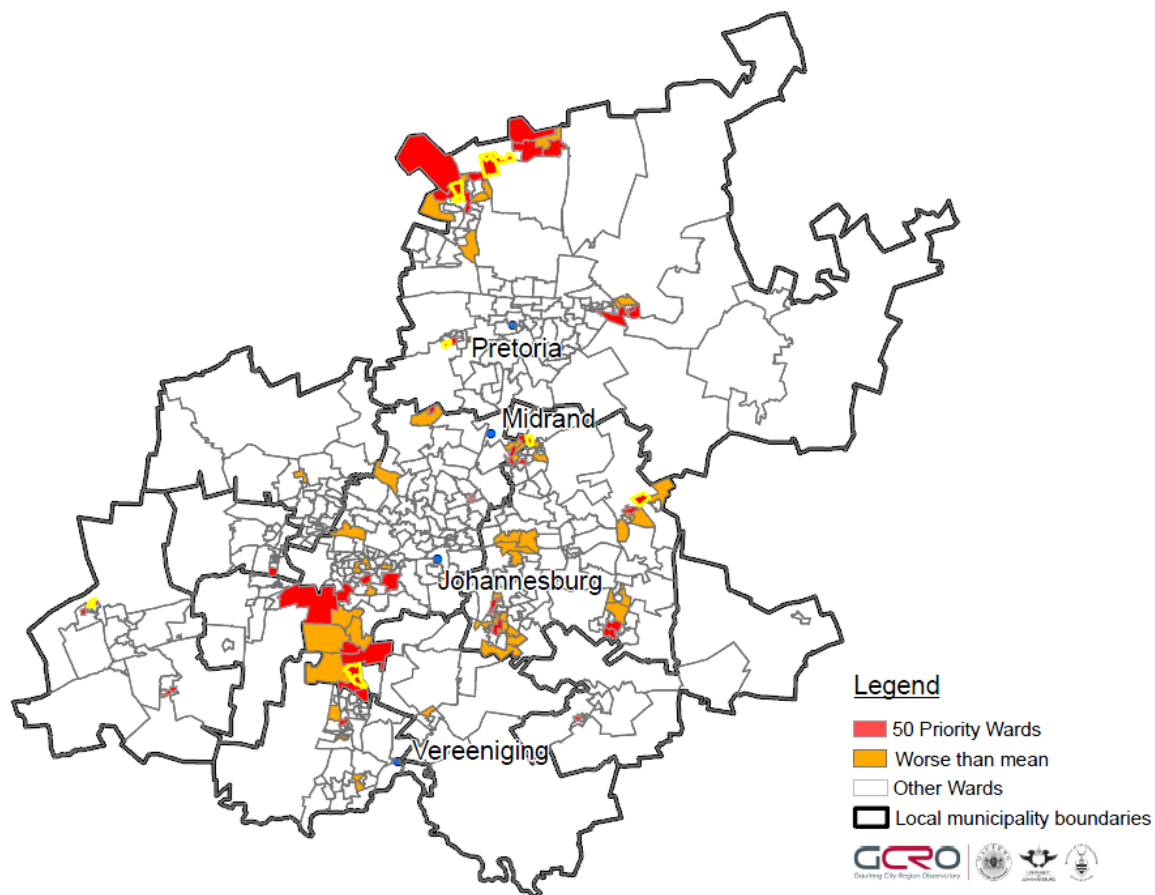
50<sup>th</sup> ward: 12.2%  
Mean: 4%



# Indicators mapped per ward

*According to data availability, accuracy and currency*

1. % of adults receiving social grants
2. % of adults that are economically active
3. % Unemployment
4. Average household income (in Rands)
5. % of the area of each ward that is covered by informal settlements

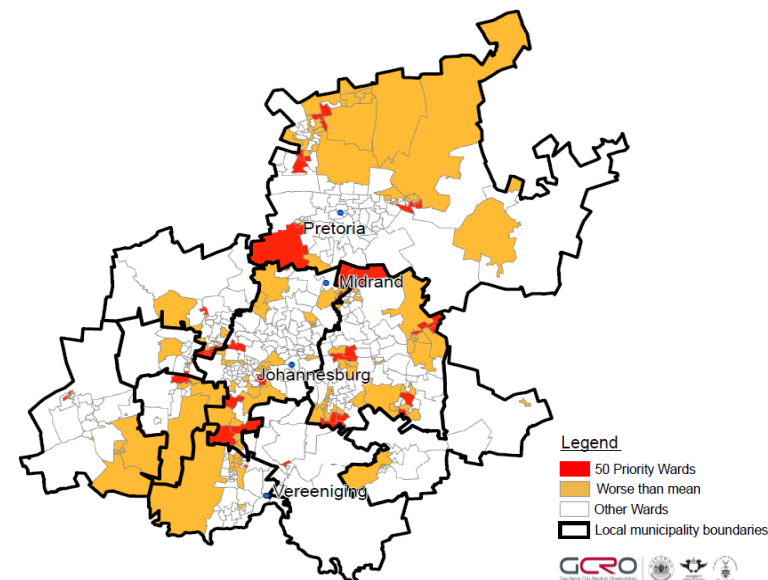


# Indicators mapped per ward

*According to data availability, accuracy and currency*

1. % of adults receiving social grants
2. % of adults that are economically active
3. % Unemployment
4. Average household income (in Rands)
5. % of the area of each ward that is covered by informal settlements
6. % of households without access to dwellings suitable by RDP standards

50<sup>th</sup> ward: 61.9%  
Mean: 22.3%

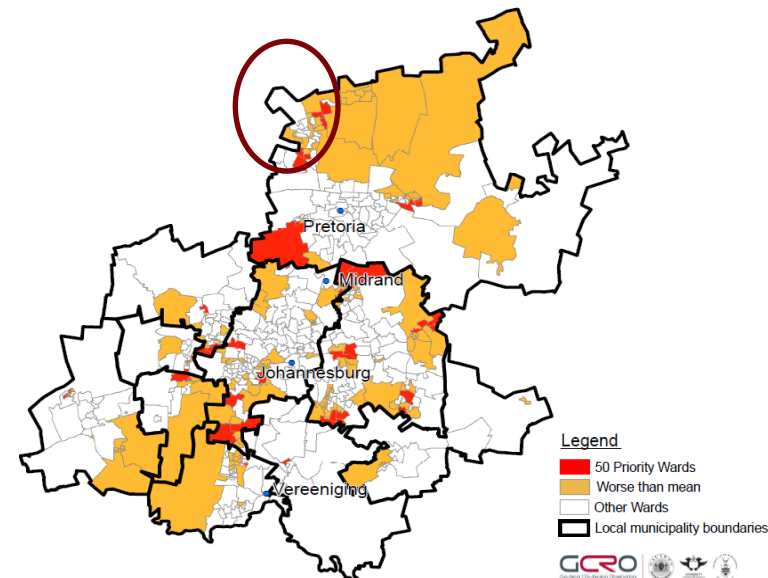


# Indicators mapped per ward

*According to data availability, accuracy and currency*

1. % of adults receiving social grants
2. % of adults that are economically active
3. % Unemployment
4. Average household income (in Rands)
5. % of the area of each ward that is covered by informal settlements
6. % of households without access to dwellings suitable by RDP standards

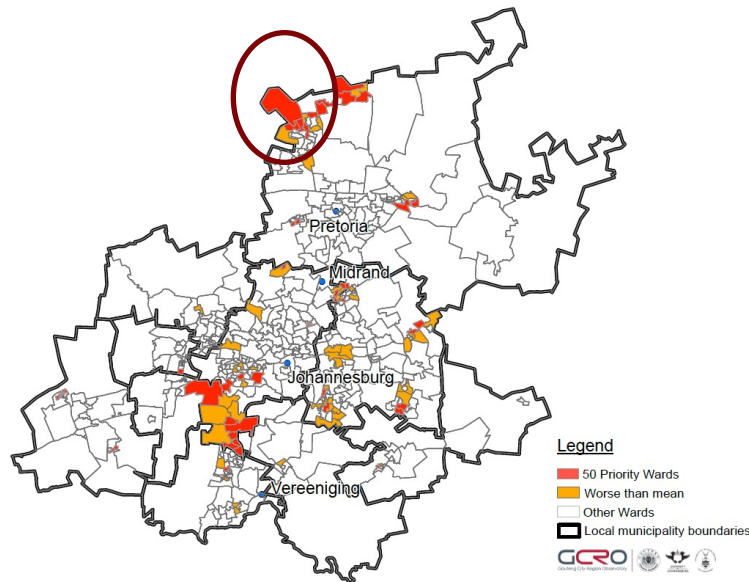
50<sup>th</sup> ward: 61.9%  
Mean: 22.3%



# Indicators mapped per ward

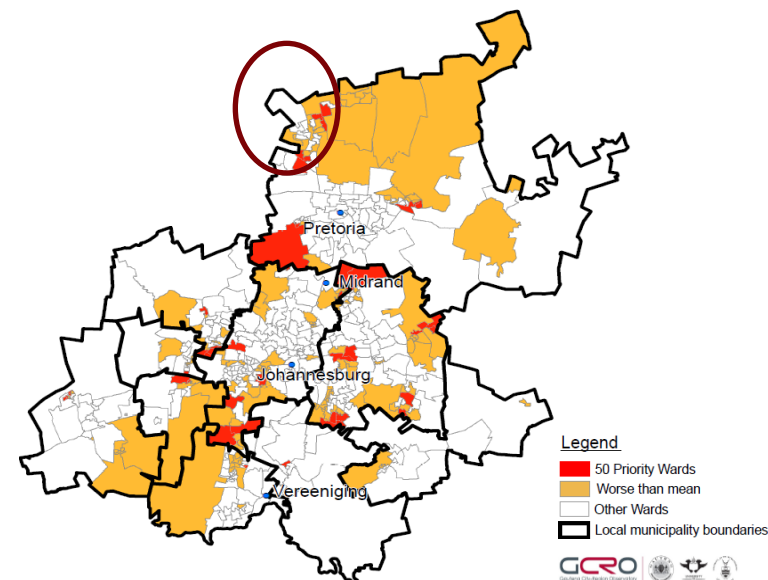
*According to data availability, accuracy and currency*

1. % of adults receiving social grants
2. % of adults that are economically active
3. % Unemployment
4. Average household income (in Rands)
5. % of the area of each ward that is covered by informal settlements
6. % of households without access to dwellings suitable by RDP standards



% of the area of each ward that is covered by informal settlements  
(ESKOM 2008 spot building count)

% of households without access to dwellings suitable by RDP standards  
(Census 2001)

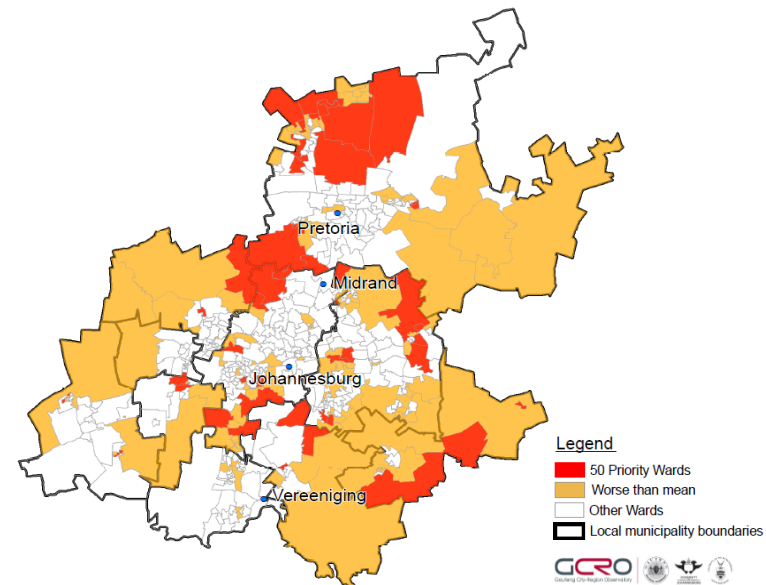


# Indicators mapped per ward

*According to data availability, accuracy and currency*

1. % of adults receiving social grants
2. % of adults that are economically active
3. % Unemployment
4. Average household income (in Rands)
5. % of the area of each ward that is covered by informal settlements
6. % of households without access to dwellings suitable by RDP standards
7. % of households without access to drinking water by RDP standards

50<sup>th</sup> ward: 22.2%  
Mean: 8.96%

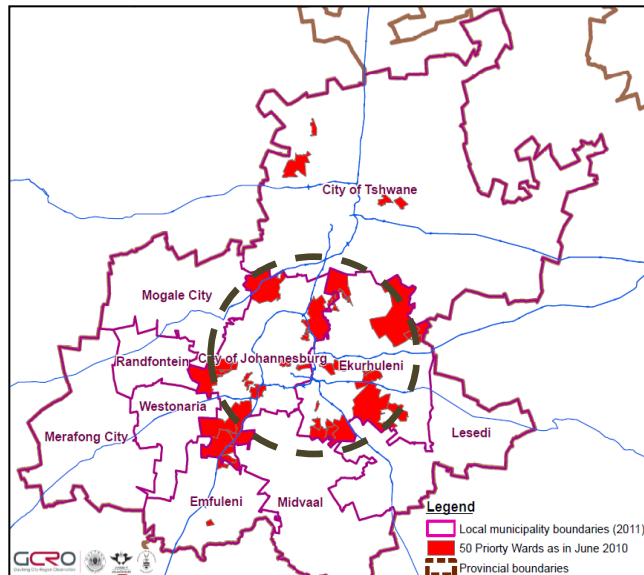




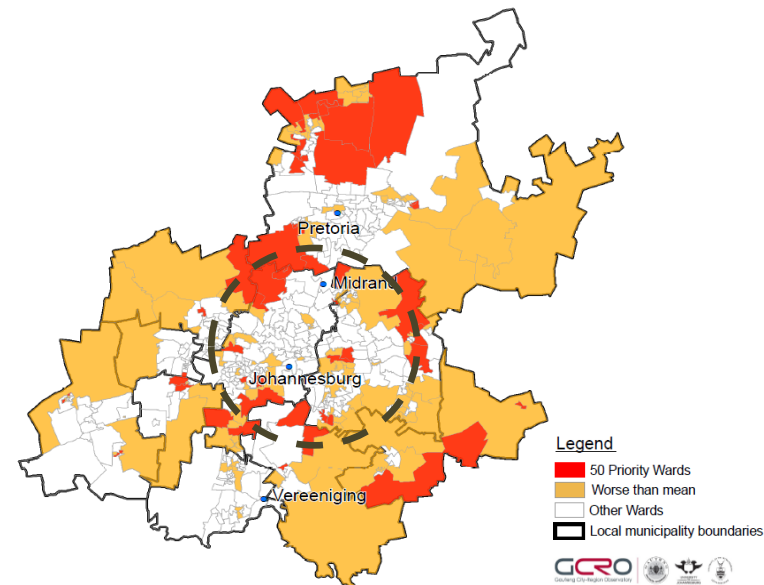
# Indicators mapped per ward

*According to data availability, accuracy and currency*

1. % of adults receiving social grants
2. % of adults that are economically active
3. % Unemployment
4. Average household income (in Rands)
5. % of the area of each ward that is covered by informal settlements
6. % of households without access to dwellings suitable by RDP standards
7. % of households without access to drinking water by RDP standards



50<sup>th</sup> ward: 22.2%  
Mean: 8.96%

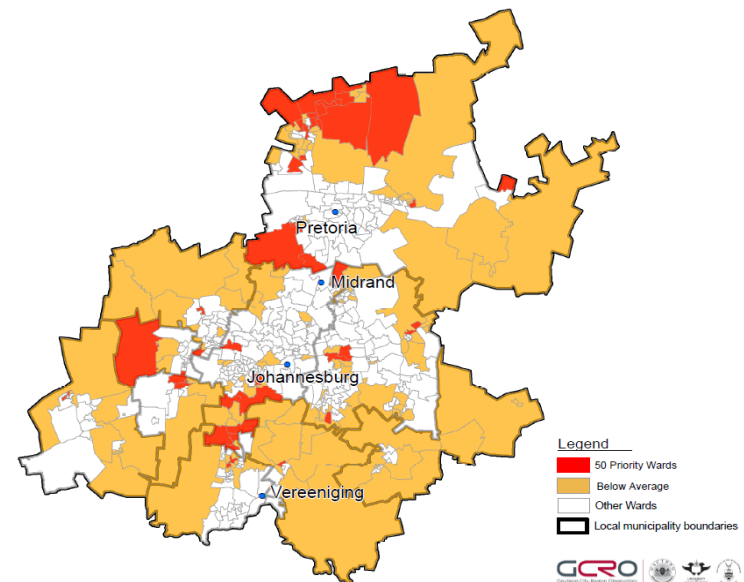


# Indicators used and mapped per ward

*According to data availability, accuracy and currency*

1. % of adults receiving social grants
2. % of adults that are economically active
3. % Unemployment
4. Average household income (in Rands)
5. % of the area of each ward that is covered by informal settlements
6. % of households without access to dwellings suitable by RDP standards
7. % of households without access to drinking water by RDP standards
8. % of households without access to sanitation by RDP standards

50<sup>th</sup> ward: 59.5%  
Mean: 17.79%

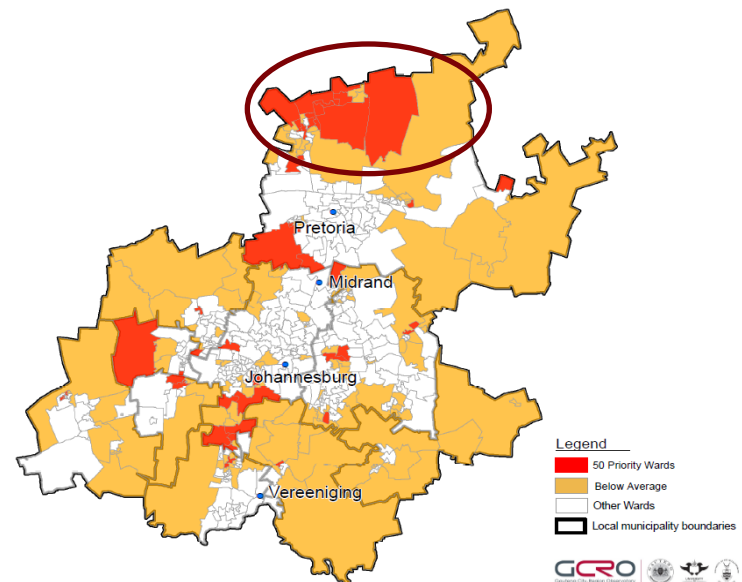


# Indicators used and mapped per ward

*According to data availability, accuracy and currency*

1. % of adults receiving social grants
2. % of adults that are economically active
3. % Unemployment
4. Average household income (in Rands)
5. % of the area of each ward that is covered by informal settlements
6. % of households without access to dwellings suitable by RDP standards
7. % of households without access to drinking water by RDP standards
8. % of households without access to sanitation by RDP standards

50<sup>th</sup> ward: 59.5%  
Mean: 17.79%

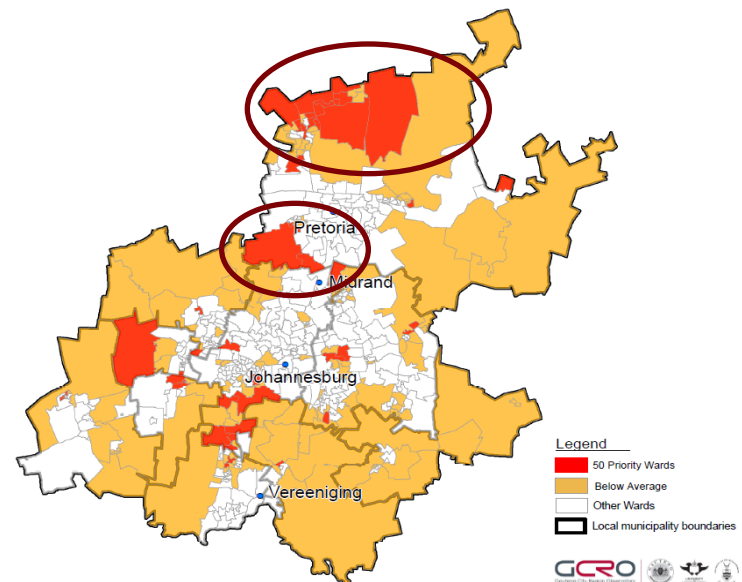


# Indicators used and mapped per ward

*According to data availability, accuracy and currency*

1. % of adults receiving social grants
2. % of adults that are economically active
3. % Unemployment
4. Average household income (in Rands)
5. % of the area of each ward that is covered by informal settlements
6. % of households without access to dwellings suitable by RDP standards
7. % of households without access to drinking water by RDP standards
8. % of households without access to sanitation by RDP standards

50<sup>th</sup> ward: 59.5%  
Mean: 17.79%

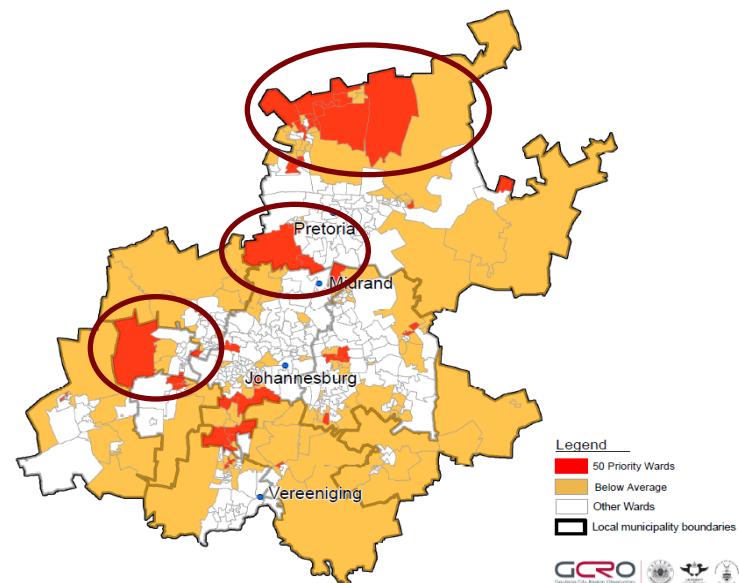


# Indicators used and mapped per ward

*According to data availability, accuracy and currency*

1. % of adults receiving social grants
2. % of adults that are economically active
3. % Unemployment
4. Average household income (in Rands)
5. % of the area of each ward that is covered by informal settlements
6. % of households without access to dwellings suitable by RDP standards
7. % of households without access to drinking water by RDP standards
8. % of households without access to sanitation by RDP standards

50<sup>th</sup> ward: 59.5%  
Mean: 17.79%

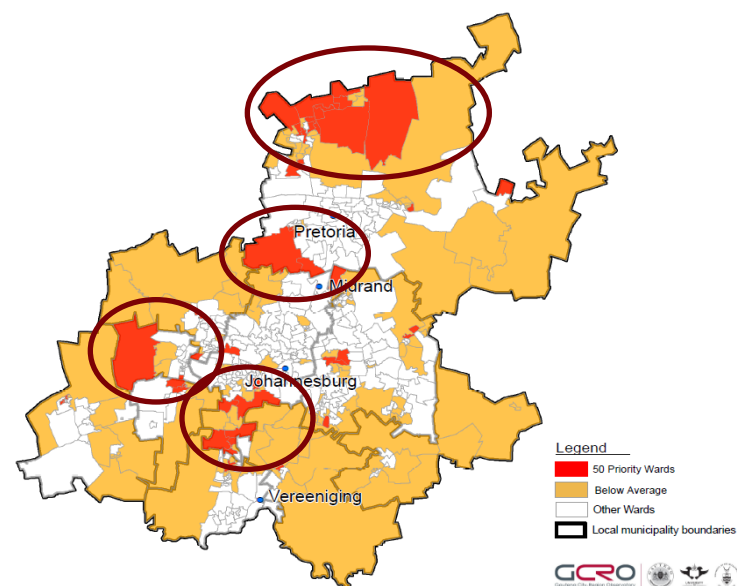


# Indicators used and mapped per ward

*According to data availability, accuracy and currency*

1. % of adults receiving social grants
2. % of adults that are economically active
3. % Unemployment
4. Average household income (in Rands)
5. % of the area of each ward that is covered by informal settlements
6. % of households without access to dwellings suitable by RDP standards
7. % of households without access to drinking water by RDP standards
8. % of households without access to sanitation by RDP standards

50<sup>th</sup> ward: 59.5%  
Mean: 17.79%

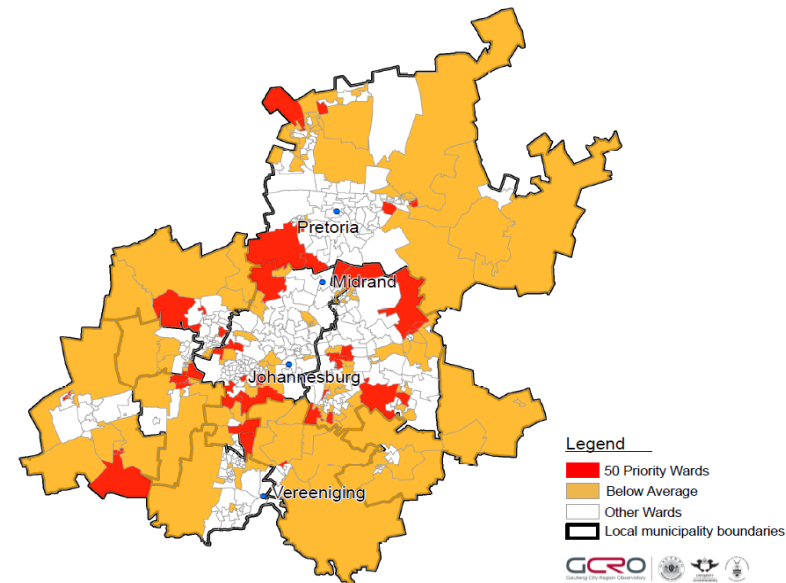


# Indicators used and mapped per ward

*According to data availability, accuracy and currency*

1. % of adults receiving social grants
2. % of adults that are economically active
3. % Unemployment
4. Average household income (in Rands)
5. % of the area of each ward that is covered by informal settlements
6. % of households without access to dwellings suitable by RDP standards
7. % of households without access to drinking water by RDP standards
8. % of households without access to sanitation by RDP standards
9. % of households without access to electricity for lighting by RDP standards

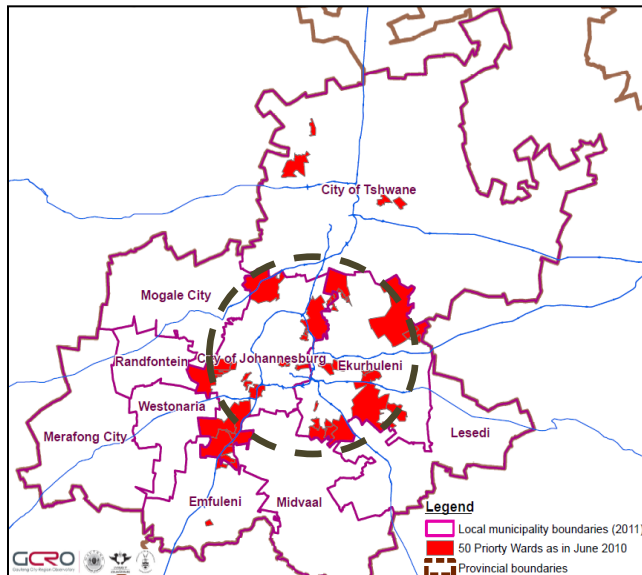
50<sup>th</sup> ward: 52.5%  
Mean: 19.3%



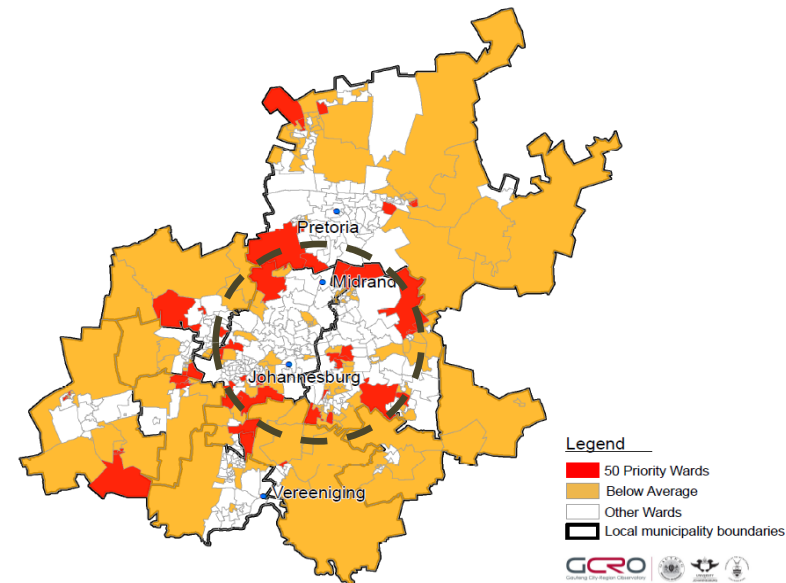
# Indicators used and mapped per ward

*According to data availability, accuracy and currency*

1. % of adults receiving social grants
2. % of adults that are economically active
3. % Unemployment
4. Average household income (in Rands)
5. % of the area of each ward that is covered by informal settlements
6. % of households without access to dwellings suitable by RDP standards
7. % of households without access to drinking water by RDP standards
8. % of households without access to sanitation by RDP standards
9. % of households without access to electricity for lighting by RDP standards



50<sup>th</sup> ward: 52.5%  
Mean: 19.3%



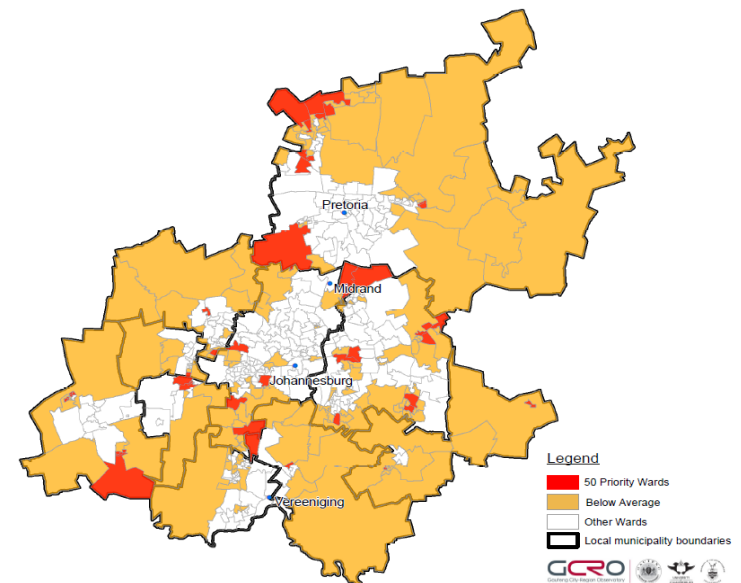


# Indicators used and mapped per ward

*According to data availability, accuracy and currency*

1. % of adults receiving social grants
2. % of adults that are economically active
3. % Unemployment
4. Average household income (in Rands)
5. % of the area of each ward that is covered by informal settlements
6. % of households without access to dwellings suitable by RDP standards
7. % of households without access to drinking water by RDP standards
8. % of households without access to sanitation by RDP standards
9. % of households without access to electricity for lighting by RDP standards
10. % of households without access to electricity for cooking by RDP standards

50<sup>th</sup> ward: 66%  
Mean: 25.8%

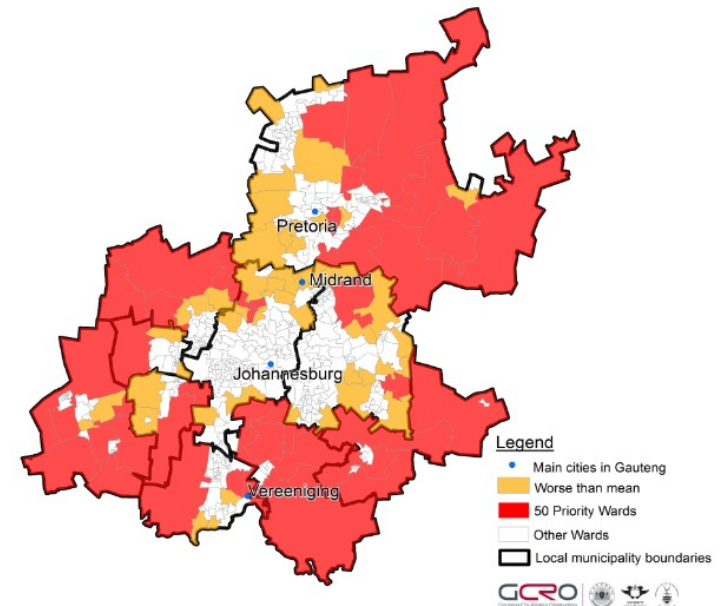


# Indicators used and mapped per ward

*According to data availability, accuracy and currency*

1. % of adults receiving social grants
2. % of adults that are economically active
3. % Unemployment
4. Average household income (in Rands)
5. % of the area of each ward that is covered by informal settlements
6. % of households without access to dwellings suitable by RDP standards
7. % of households without access to drinking water by RDP standards
8. % of households without access to sanitation by RDP standards
9. % of households without access to electricity for lighting by RDP standards
10. % of households without access to electricity for cooking by RDP standards
11. % of dwellings that are further than 5km from a primary health care facility

50<sup>th</sup> ward: 14.9%  
(Mean: 4.3%)

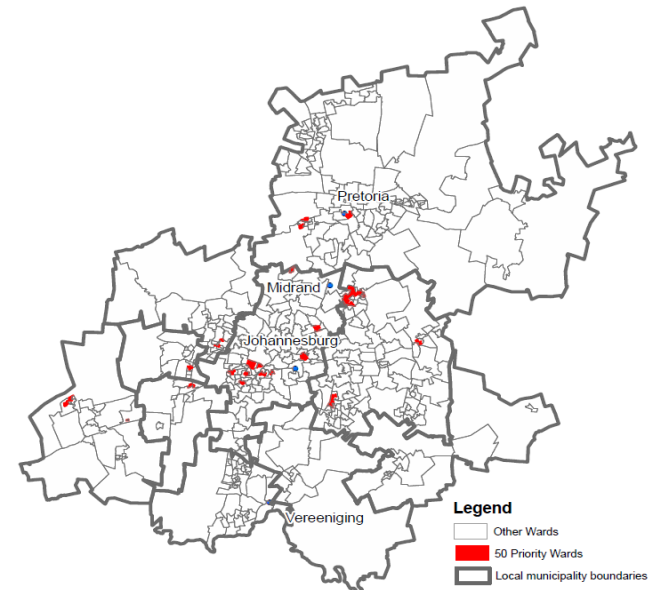


# Indicators used and mapped per ward

*According to data availability, accuracy and currency*

1. % of adults receiving social grants
2. % of adults that are economically active
3. % Unemployment
4. Average household income (in Rands)
5. % of the area of each ward that is covered by informal settlements
6. % of households without access to dwellings suitable by RDP standards
7. % of households without access to drinking water by RDP standards
8. % of households without access to sanitation by RDP standards
9. % of households without access to electricity for lighting by RDP standards
10. % of households without access to electricity for cooking by RDP standards
11. % of dwellings that are further than 5km from a primary health care facility
12. Household density per square kilometre

50<sup>th</sup> ward: 3 000

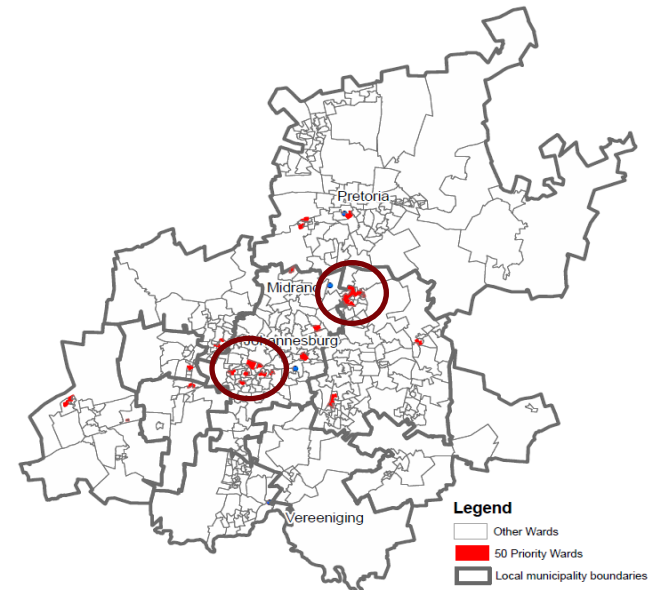


# Indicators used and mapped per ward

*According to data availability, accuracy and currency*

1. % of adults receiving social grants
2. % of adults that are economically active
3. % Unemployment
4. Average household income (in Rands)
5. % of the area of each ward that is covered by informal settlements
6. % of households without access to dwellings suitable by RDP standards
7. % of households without access to drinking water by RDP standards
8. % of households without access to sanitation by RDP standards
9. % of households without access to electricity for lighting by RDP standards
10. % of households without access to electricity for cooking by RDP standards
11. % of dwellings that are further than 5km from a primary health care facility
12. Household density per square kilometre

50<sup>th</sup> ward: 3 000  
Mean: 693.18

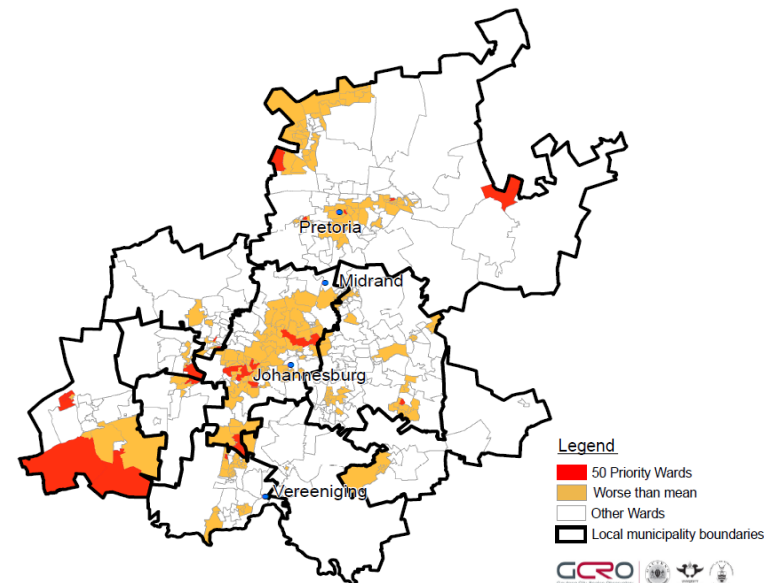


# Indicators used and mapped per ward

*According to data availability, accuracy and currency*

1. % of adults receiving social grants
2. % of adults that are economically active
3. % Unemployment
4. Average household income (in Rands)
5. % of the area of each ward that is covered by informal settlements
6. % of households without access to dwellings suitable by RDP standards
7. % of households without access to drinking water by RDP standards
8. % of households without access to sanitation by RDP standards
9. % of households without access to electricity for lighting by RDP standards
10. % of households without access to electricity for cooking by RDP standards
11. % of dwellings that are further than 5km from a primary health care facility
12. Household density per square kilometre
13. % of households that are female headed

50<sup>th</sup> ward: 45.8%  
Mean: 36.63%

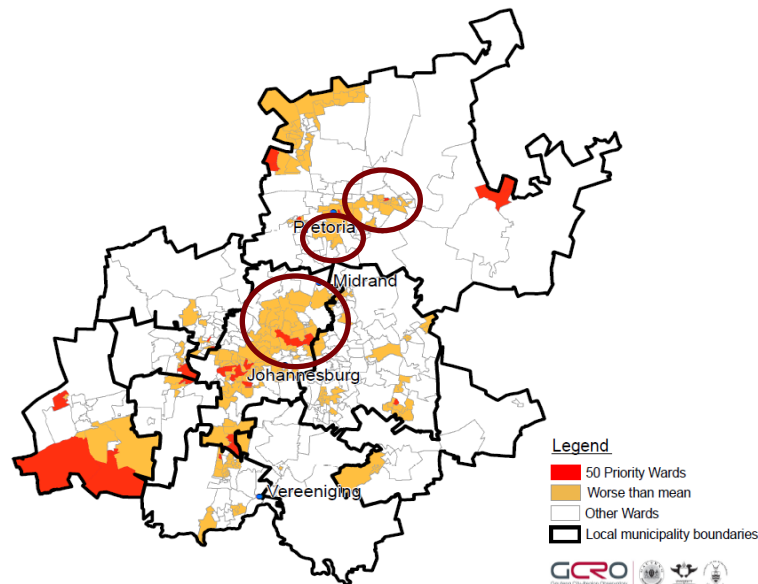


# Indicators used and mapped per ward

*According to data availability, accuracy and currency*

1. % of adults receiving social grants
2. % of adults that are economically active
3. % Unemployment
4. Average household income (in Rands)
5. % of the area of each ward that is covered by informal settlements
6. % of households without access to dwellings suitable by RDP standards
7. % of households without access to drinking water by RDP standards
8. % of households without access to sanitation by RDP standards
9. % of households without access to electricity for lighting by RDP standards
10. % of households without access to electricity for cooking by RDP standards
11. % of dwellings that are further than 5km from a primary health care facility
12. Household density per square kilometre
13. % of households that are female headed

50<sup>th</sup> ward: 45.8%  
Mean: 36.63%

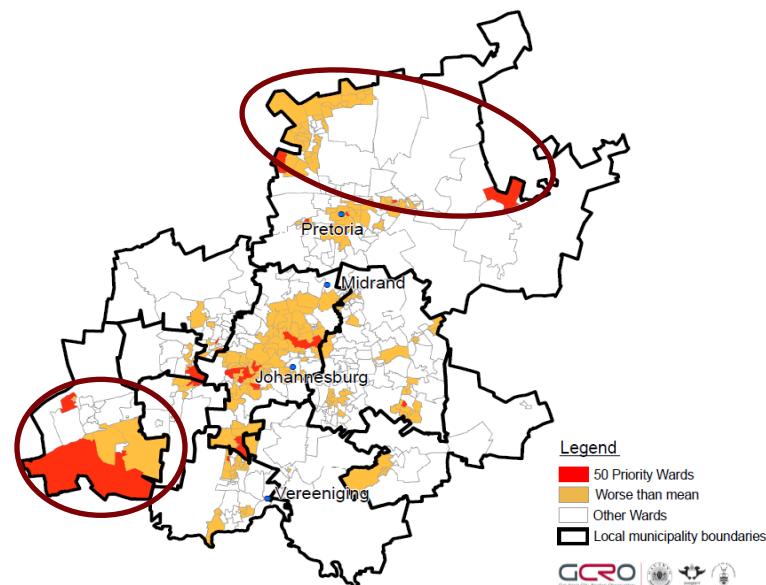


# Indicators used and mapped per ward

*According to data availability, accuracy and currency*

1. % of adults receiving social grants
2. % of adults that are economically active
3. % Unemployment
4. Average household income (in Rands)
5. % of the area of each ward that is covered by informal settlements
6. % of households without access to dwellings suitable by RDP standards
7. % of households without access to drinking water by RDP standards
8. % of households without access to sanitation by RDP standards
9. % of households without access to electricity for lighting by RDP standards
10. % of households without access to electricity for cooking by RDP standards
11. % of dwellings that are further than 5km from a primary health care facility
12. Household density per square kilometre
13. % of households that are female headed

50<sup>th</sup> ward: 45.8%  
Mean: 36.63%

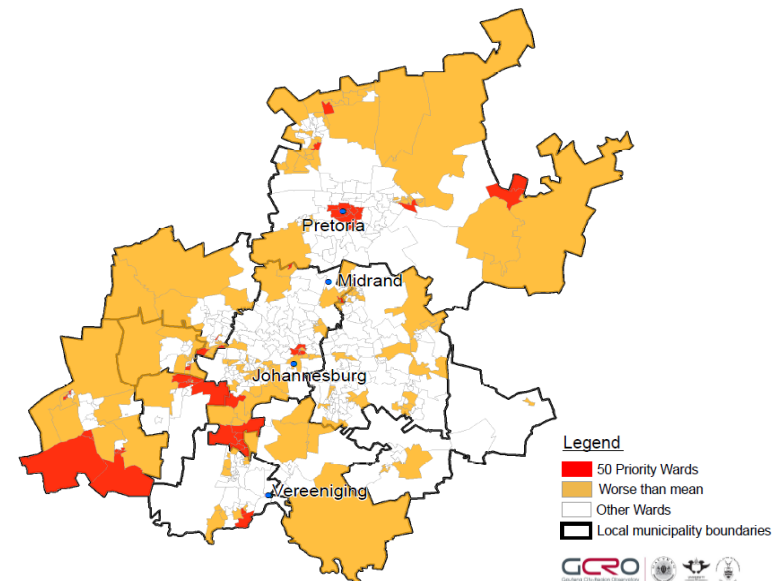


# Indicators used and mapped per ward

*According to data availability, accuracy and currency*

1. % of adults receiving social grants
2. % of adults that are economically active
3. % Unemployment
4. Average household income (in Rands)
5. % of the area of each ward that is covered by informal settlements
6. % of households without access to dwellings suitable by RDP standards
7. % of households without access to drinking water by RDP standards
8. % of households without access to sanitation by RDP standards
9. % of households without access to electricity for lighting by RDP standards
10. % of households without access to electricity for cooking by RDP standards
11. % of dwellings that are further than 5km from a primary health care facility
12. Household density per square kilometre
13. % of households that are female headed
14. % of households that are child headed

50<sup>th</sup> ward: 2%  
Mean: 1%



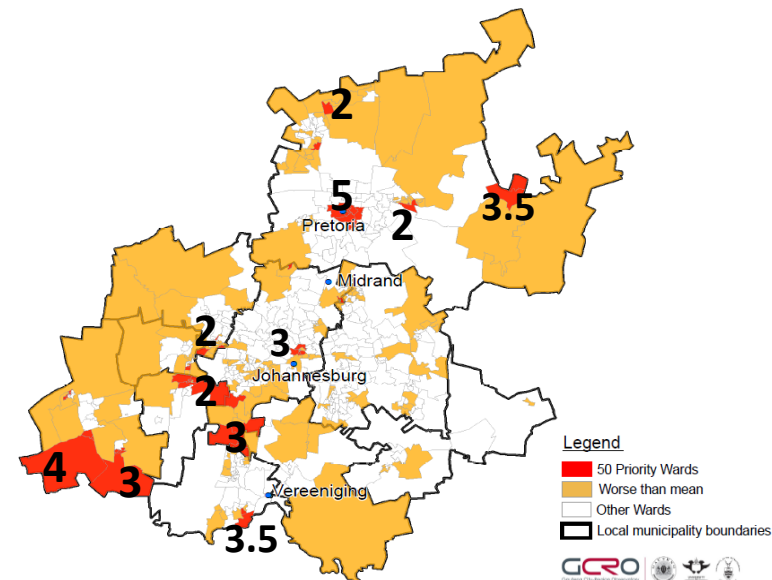


# Indicators used and mapped per ward

*According to data availability, accuracy and currency*

1. % of adults receiving social grants
2. % of adults that are economically active
3. % Unemployment
4. Average household income (in Rands)
5. % of the area of each ward that is covered by informal settlements
6. % of households without access to dwellings suitable by RDP standards
7. % of households without access to drinking water by RDP standards
8. % of households without access to sanitation by RDP standards
9. % of households without access to electricity for lighting by RDP standards
10. % of households without access to electricity for cooking by RDP standards
11. % of dwellings that are further than 5km from a primary health care facility
12. Household density per square kilometre
13. % of households that are female headed
14. % of households that are child headed

50<sup>th</sup> ward: 2%  
Mean: 1%

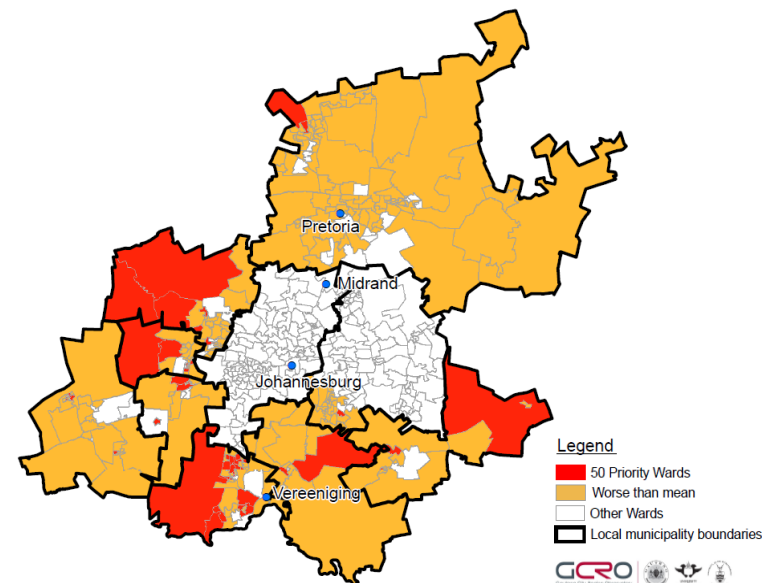


# Indicators used and mapped per ward

*According to data availability, accuracy and currency*

1. % of adults receiving social grants
2. % of adults that are economically active
3. % Unemployment
4. Average household income (in Rands)
5. % of the area of each ward that is covered by informal settlements
6. % of households without access to dwellings suitable by RDP standards
7. % of households without access to drinking water by RDP standards
8. % of households without access to sanitation by RDP standards
9. % of households without access to electricity for lighting by RDP standards
10. % of households without access to electricity for cooking by RDP standards
11. % of dwellings that are further than 5km from a primary health care facility
12. Household density per square kilometre
13. % of households that are female headed
14. % of households that are child headed
15. % of individuals with one or more disabilities

50<sup>th</sup> ward: 5.1%  
Mean: 2.16%

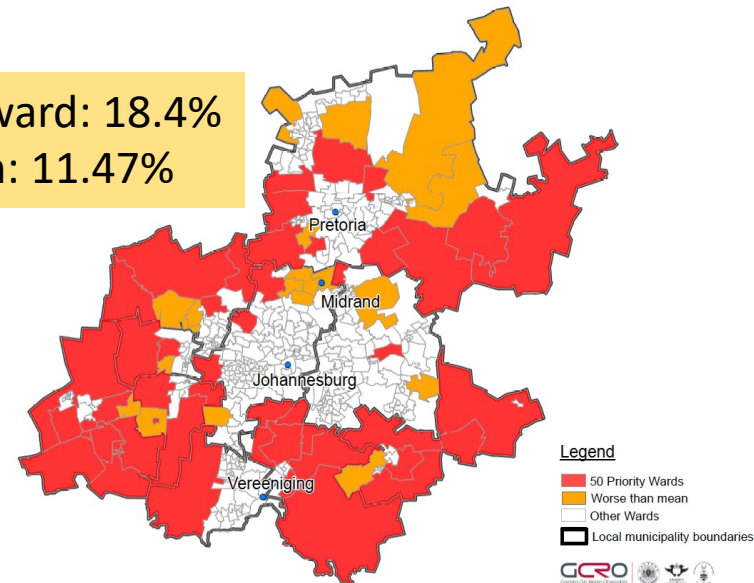


# Indicators used and mapped per ward

*According to data availability, accuracy and currency*

1. % of adults receiving social grants
2. % of adults that are economically active
3. % Unemployment
4. Average household income (in Rands)
5. % of the area of each ward that is covered by informal settlements
6. % of households without access to dwellings suitable by RDP standards
7. % of households without access to drinking water by RDP standards
8. % of households without access to sanitation by RDP standards
9. % of households without access to electricity for lighting by RDP standards
10. % of households without access to electricity for cooking by RDP standards
11. % of dwellings that are further than 5km from a primary health care facility
12. Household density per square kilometre
13. % of households that are female headed
14. % of households that are child headed
15. % of individuals with one or more disabilities
16. % of population aged 0-18 that is further than 3km from any public school

50<sup>th</sup> ward: 18.4%  
Mean: 11.47%

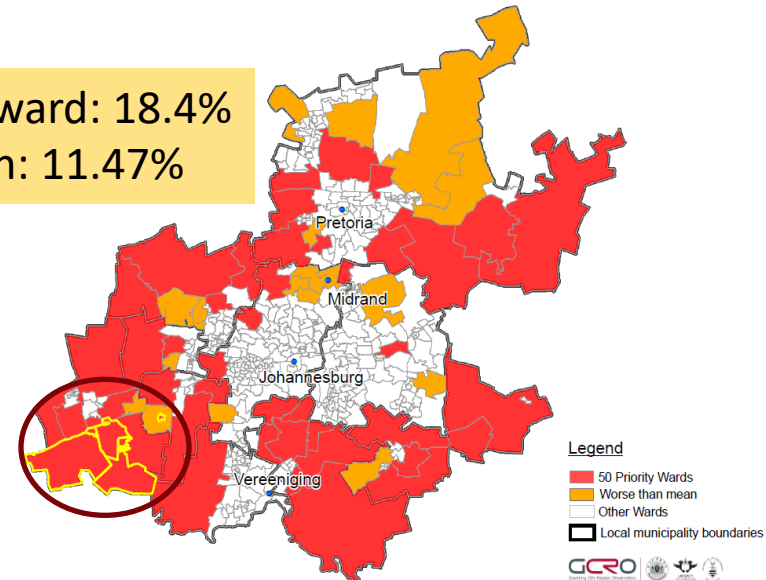


# Indicators used and mapped per ward

*According to data availability, accuracy and currency*

1. % of adults receiving social grants
2. % of adults that are economically active
3. % Unemployment
4. Average household income (in Rands)
5. % of the area of each ward that is covered by informal settlements
6. % of households without access to dwellings suitable by RDP standards
7. % of households without access to drinking water by RDP standards
8. % of households without access to sanitation by RDP standards
9. % of households without access to electricity for lighting by RDP standards
10. % of households without access to electricity for cooking by RDP standards
11. % of dwellings that are further than 5km from a primary health care facility
12. Household density per square kilometre
13. % of households that are female headed
14. % of households that are child headed
15. % of individuals with one or more disabilities
16. % of population aged 0-18 that is further than 3km from any public school

50<sup>th</sup> ward: 18.4%  
Mean: 11.47%

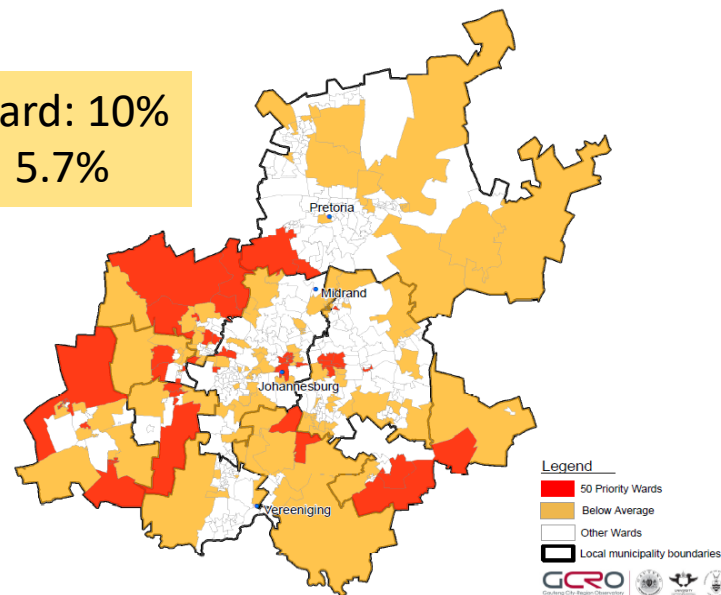


# Indicators used and mapped per ward

*According to data availability, accuracy and currency*

1. % of adults receiving social grants
2. % of adults that are economically active
3. % Unemployment
4. Average household income (in Rands)
5. % of the area of each ward that is covered by informal settlements
6. % of households without access to dwellings suitable by RDP standards
7. % of households without access to drinking water by RDP standards
8. % of households without access to sanitation by RDP standards
9. % of households without access to electricity for lighting by RDP standards
10. % of households without access to electricity for cooking by RDP standards
11. % of dwellings that are further than 5km from a primary health care facility
12. Household density per square kilometre
13. % of households that are female headed
14. % of households that are child headed
15. % of individuals with one or more disabilities
16. % of population aged 0-18 that is further than 3km from any public school
17. % of population aged 7-14 not attending school

50<sup>th</sup> ward: 10%  
Mean: 5.7%

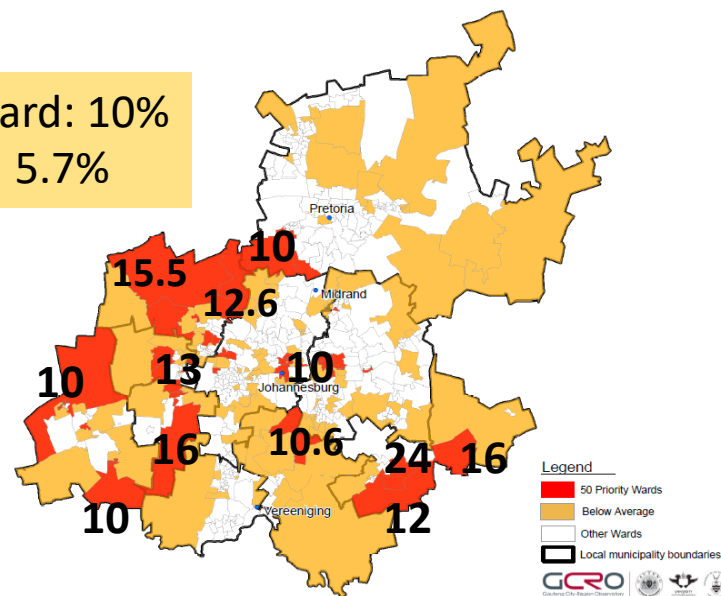


# Indicators used and mapped per ward

*According to data availability, accuracy and currency*

1. % of adults receiving social grants
2. % of adults that are economically active
3. % Unemployment
4. Average household income (in Rands)
5. % of the area of each ward that is covered by informal settlements
6. % of households without access to dwellings suitable by RDP standards
7. % of households without access to drinking water by RDP standards
8. % of households without access to sanitation by RDP standards
9. % of households without access to electricity for lighting by RDP standards
10. % of households without access to electricity for cooking by RDP standards
11. % of dwellings that are further than 5km from a primary health care facility
12. Household density per square kilometre
13. % of households that are female headed
14. % of households that are child headed
15. % of individuals with one or more disabilities
16. % of population aged 0-18 that is further than 3km from any public school
17. % of population aged 7-14 not attending school

50<sup>th</sup> ward: 10%  
Mean: 5.7%

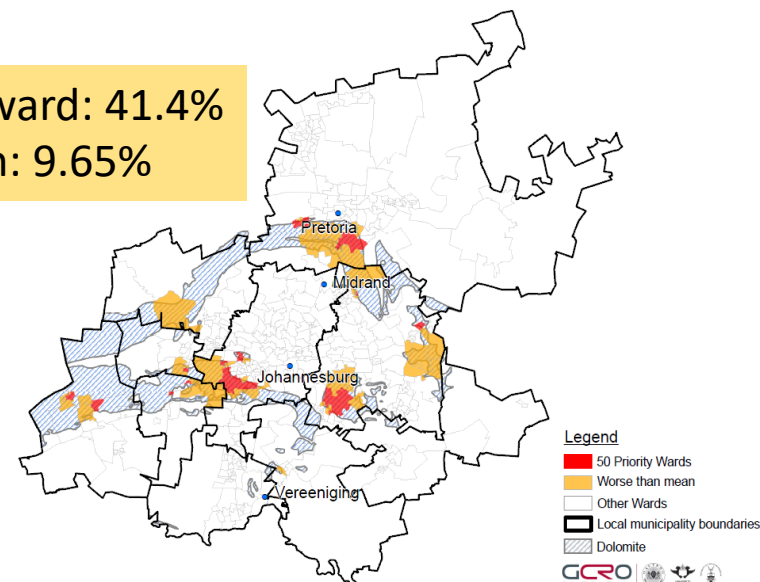


# Indicators used and mapped per ward

*According to data availability, accuracy and currency*

1. % of adults receiving social grants
2. % of adults that are economically active
3. % Unemployment
4. Average household income (in Rands)
5. % of the area of each ward that is covered by informal settlements
6. % of households without access to dwellings suitable by RDP standards
7. % of households without access to drinking water by RDP standards
8. % of households without access to sanitation by RDP standards
9. % of households without access to electricity for lighting by RDP standards
10. % of households without access to electricity for cooking by RDP standards
11. % of dwellings that are further than 5km from a primary health care facility
12. Household density per square kilometre
13. % of households that are female headed
14. % of households that are child headed
15. % of individuals with one or more disabilities
16. % of population aged 0-18 that is further than 3km from any public school
17. % of population aged 7-14 not attending school
18. % of populated areas overlaying dolomite

50<sup>th</sup> ward: 41.4%  
Mean: 9.65%



# Consolidation

*Consolidated ranking map of '50 Priority Wards' using these indicators*

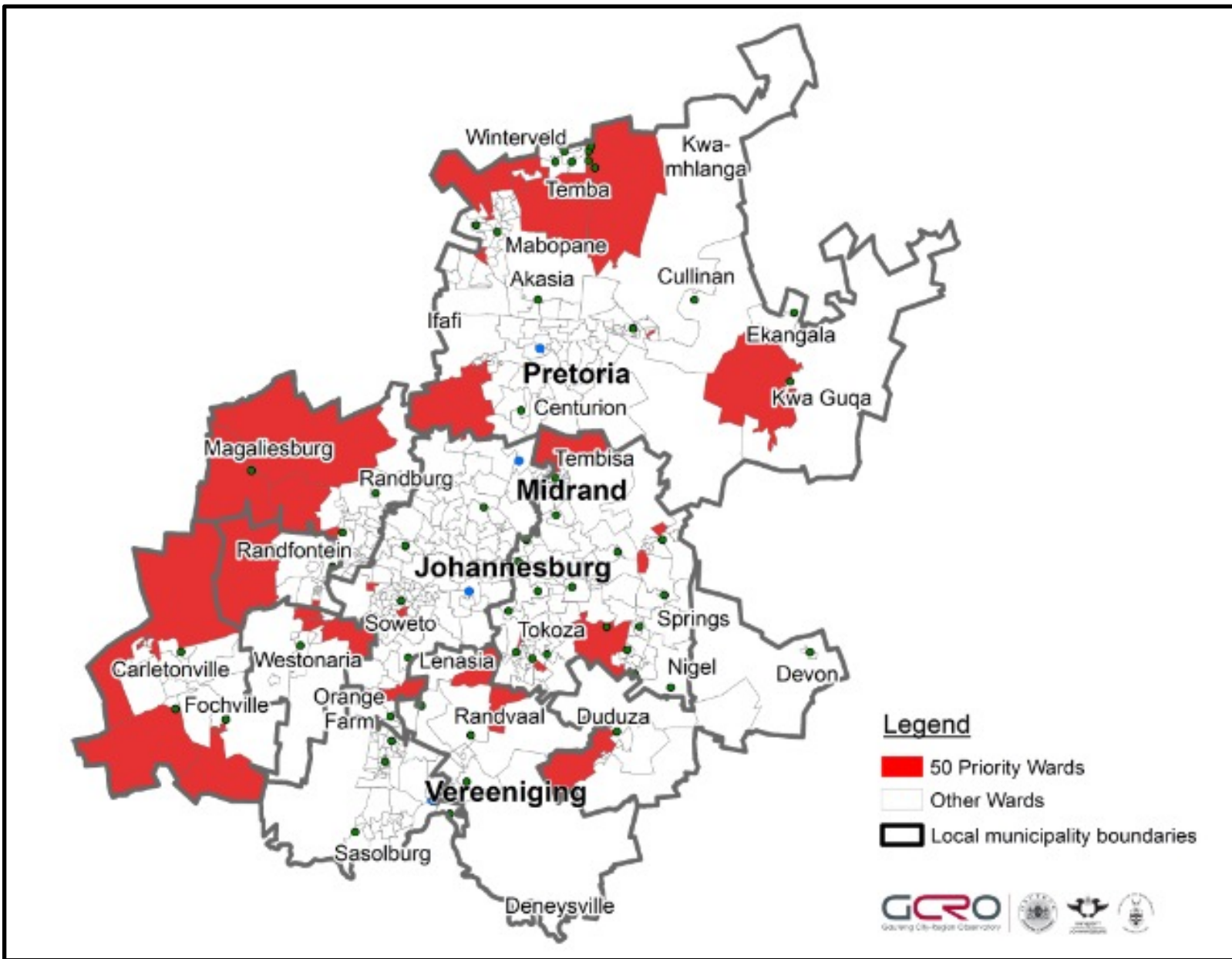
- These indicators were used to derive a consolidated picture of 50 Priority Wards using the 2011 ward boundaries.
- For each indicator, each ward was given a rank, 1 to 508, with 1 being the best and 508 being the worst.
- The wards' rank numbers were added for each of the indicators.
- This gives an index, where the ward with the highest total score (the sum of their ranks for each indicator) is the worst, or highest priority, and the ward with the lowest score is the best, or lowest priority.
- On this index the 50 Priority Wards can be counted, i.e. those 50 with the highest scores.
- This can be viewed spatially on maps, or manipulated using a spreadsheet, where the ranking of wards can be tested depending on the weighting of indicators.



# Consolidated picture of 50 Priority Wards using 2011 ward boundaries

## Index across 18 indicators

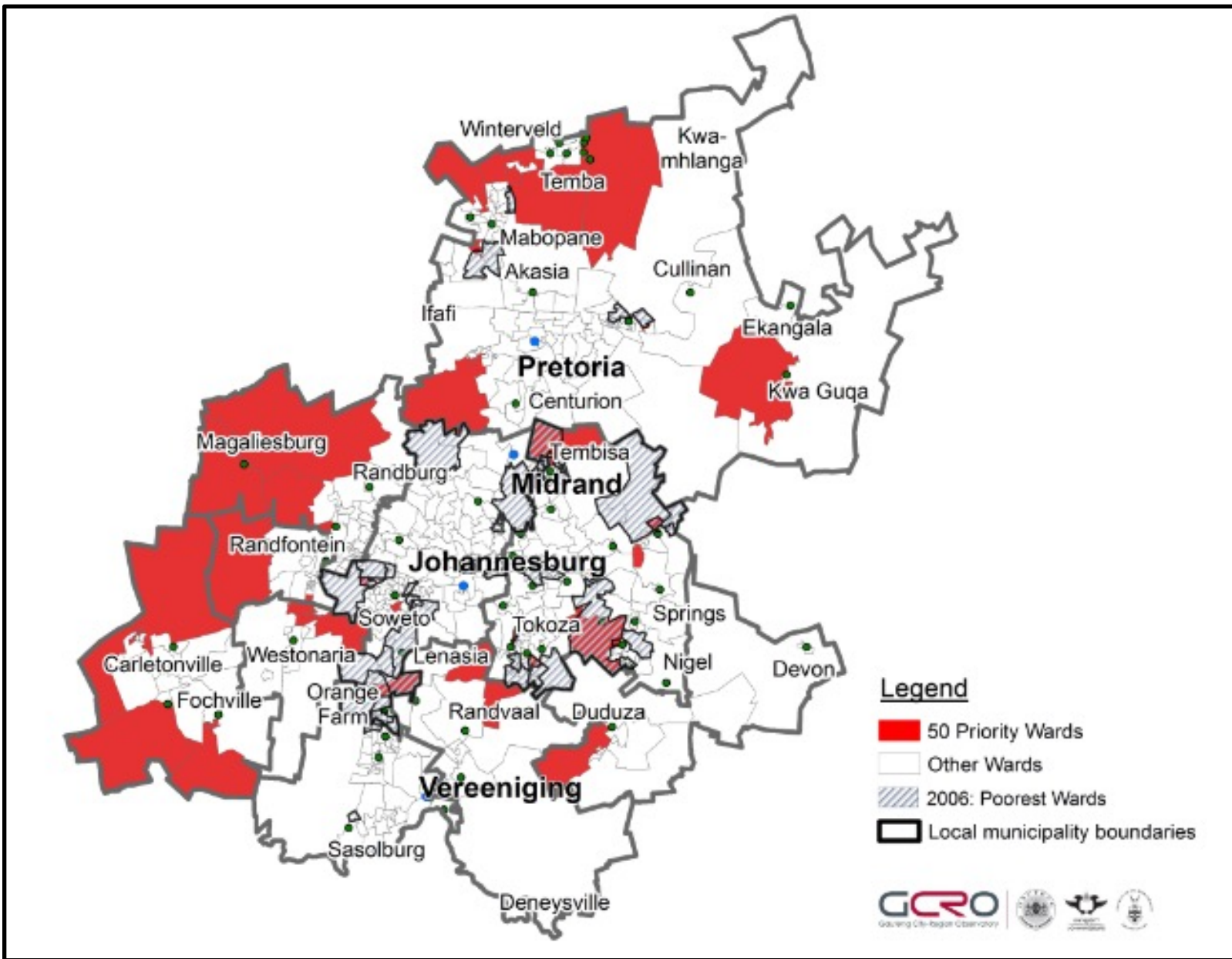
Source: Summing the rank position of wards on each indicator (highest total = worst ward)



# Consolidated picture vs. 50 Priority Wards using 2006 ward boundaries

Index across 18 indicators

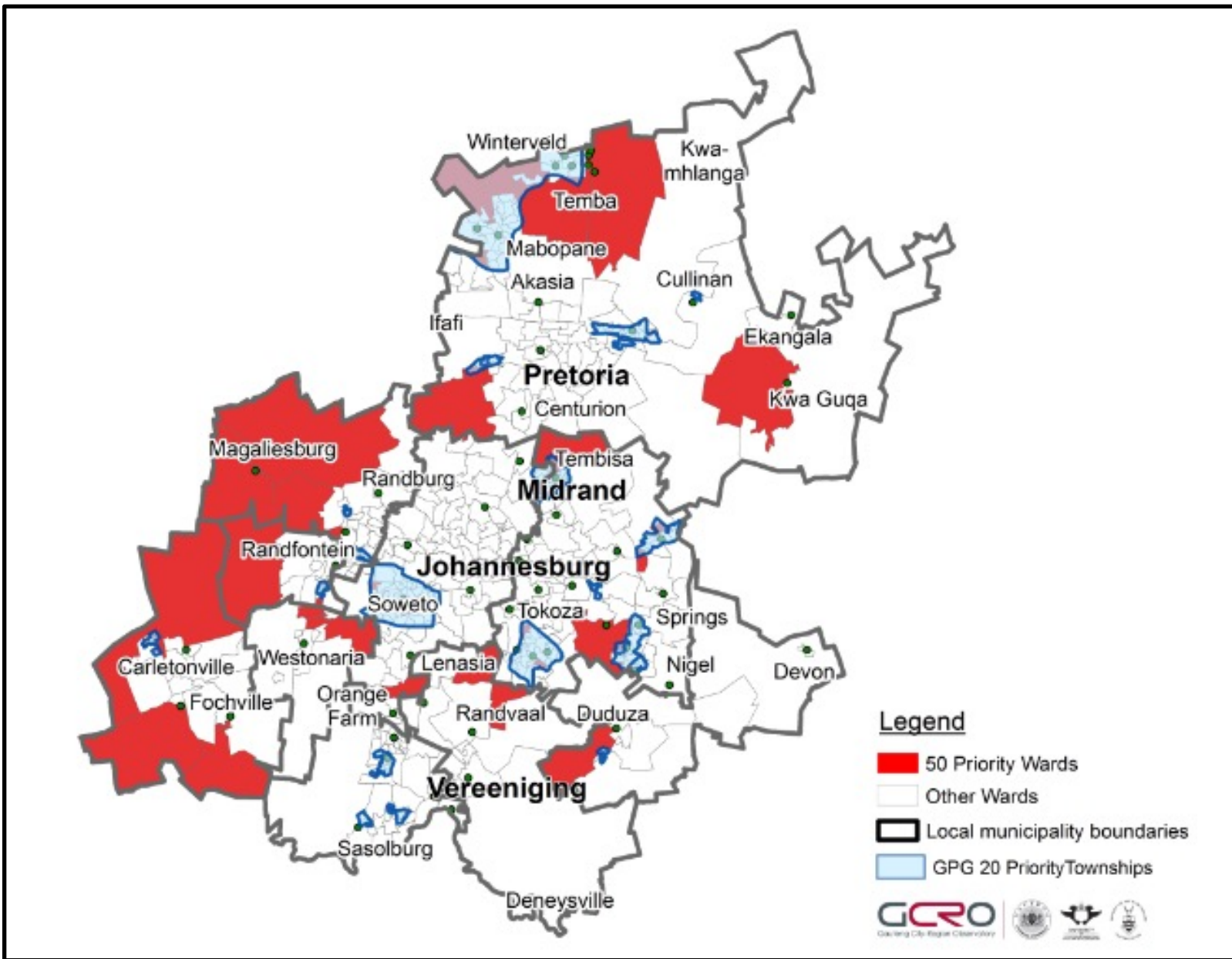
Source: Summing the rank position of wards on each indicator (highest total = worst ward)



# Consolidated picture of 50 Priority Wards against 20 Priority Townships

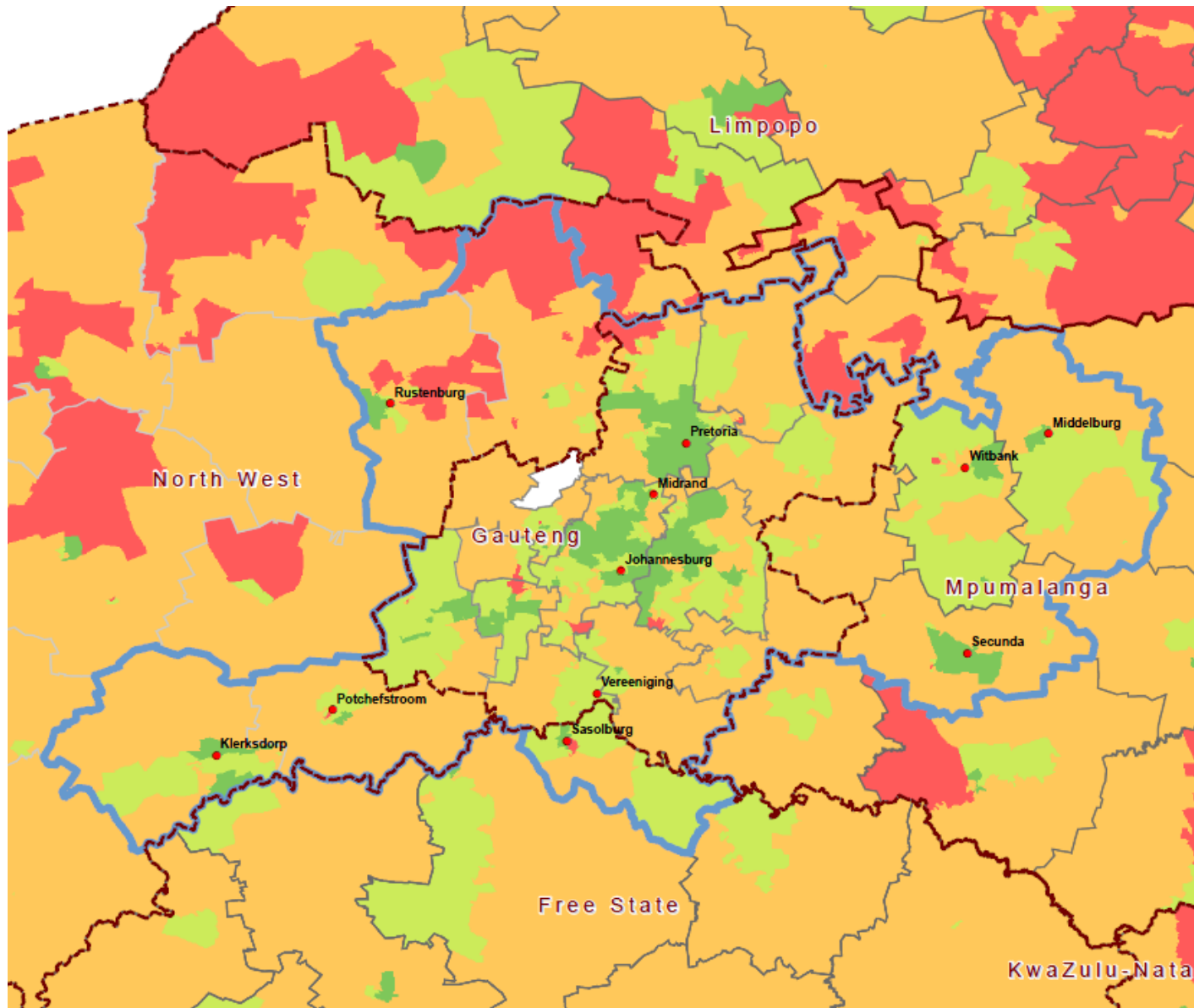
Index across 18 indicators

Source: Summing the rank position of wards on each indicator (highest total = worst ward)



# Gauteng remains place where people want to be

*2006 Ward boundaries with Census 2001 Poverty Index for South Africa*



# Consolidation

*Ranking wards according to weighting of indicators*

	Weighting	Source
% of adults receiving social grants	1.0	Lightstone, 2010
% of adults that are economically active (Labour force participation rate)	1.0	Lightstone, 2010
Average household income (in Rands)	1.0	Lightstone, 2010
Unemployment rate (% unemployment)	1.0	Census 2001
% of the area of each ward that is covered by informal housing	1.0	Eskom 2008 & DoHousing
% of individuals with one or more disabilities	1.0	Census 2001
% of households without access to dwellings suitable by RDP standards	1.0	Census 2001
% of populated areas overlaying dolomite	1.0	Eskom 2008 & GDARD
% of households without access to drinking water by RDP standards	1.0	Census 2001
% of households that are female headed	1.0	Census 2001
% of households that are child headed	1.0	Census 2001
% of dwellings that are further than 5km from a primary health care facility	1.0	Eskom 2008 & DoHealth 2011
% of population aged 0-18 that is further than 3km from a public school	1.0	Lightstone 2010 & DoEduc 2011
% of population aged 7-14 not attending school	1.0	Census 2001
% of households without access to sanitation by RDP standards	1.0	Census 2001
% of households without access to electricity for lighting by RDP standards	1.0	Census 2001
% of households without access to electricity for cooking by RDP standards	1.0	Census 2001
Household density per square kilometre	1.0	Lightstone, 2010

# Consolidation

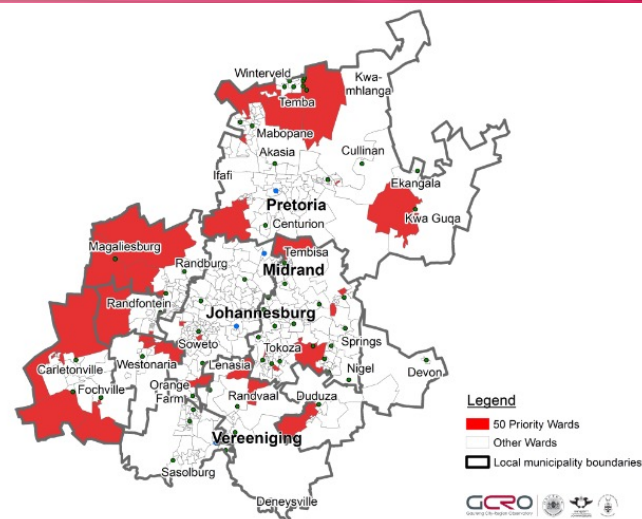
## Ranking wards according to weighting of indicators

Ranking of wards worst to best (1=worst). 50 Priority wards in red	Local Municipality	WARD_ID	Click this button and "Largest to Smallest" or "Sort descending" to re-order priority
1	Merafong City	74804008	
2	Merafong City	74804003	
3	Merafong City	74804009	
4	Merafong City	74804004	
5	Westonaria	74803011	
6	Westonaria	74803014	

		Source:	Lightstone, 2010		Lightstone, 2010		Lightstone, 2010		Census 2001		Eskom
Local Municipality	WARD_ID	Weighting applied (based on priority out of 508)	% of adults receiving social grants	Adults receiving social grants, ward ranking (worst=508)	% of adults that are economically active	Adults that are economically active, ward ranking (worst=508)	Average household income (in Rands)	Average household income, ward ranking (worst=508)	Unemployment rate (%)	Unemployment rate, ward ranking (worst=508)	% of the area of ward that is covered by informal housing
Merafong City	74804005	2319	16.17	98	75.89	25	7300	232	28.04	196	
Merafong City	74804006	8283	17.71	147	29.92	481	1400	504	48.38	458	
Merafong City	74804007	7389	20.16	273	34.61	401	3000	436	41.87	334	
Merafong City	74804008	7735	17.18	131	29.10	494	1500	501	54.29	505	
Merafong City	74804009	6466	15.64	79	26.72	505	1500	501	53.51	502	
Merafong City	74804010	4776	18.40	186	30.94	470	1600	498	48.45	460	
Merafong City	74804011	2177	11.14	24	74.75	35	8800	198	23.85	178	
Merafong City	74804012	2574	13.37	51	79.25	8	9400	192	13.61	120	
Merafong City	74804013	4284	8.40	11	85.99	4	7700	217	30.56	212	
Merafong City	74804014	1963	0.85	3	97.80	3	7600	222	10.43	92	
Merafong City	74804015	4307	23.63	432	56.66	164	11000	162	17.13	143	
Merafong City	74804016	5283	25.95	480	58.58	153	11600	158	17.29	144	
Merafong City	74804017	5651	21.99	354	67.83	92	15500	124	11.47	101	
Merafong City	74804018	5950	23.12	414	63.40	117	14600	133	13.55	119	
Merafong City	74804019	5914	0.30	1	99.37	1	7500	227	12.09	107	
Merafong City	74804020	6490	22.72	394	33.85	421	4100	360	39.66	306	
Merafong City	74804021	5649	23.98	443	51.30	193	11900	155	18.44	155	
Merafong City	74804022	7482	21.68	344	30.22	476	4400	341	36.99	267	
Merafong City	74804023	7684	19.84	256	29.58	486	3900	373	42.45	343	
Merafong City	74804024	3769	19.74	254	52.29	189	14300	136	24.12	181	
Merafong City	74804025	6753	21.18	324	29.13	493	3100	429	42.95	355	
Merafong City	74804026	6535	22.57	383	33.97	417	4200	354	38.48	288	
Merafong City	74804027	3341	14.95	67	78.27	11	9900	179	20.06	162	
Merafong City	74804028	5532	22.30	372	63.59	115	16800	115	8.99	80	
Midvaal	74202001	5937	24.75	463	56.65	165	16400	117	22.37	175	
Midvaal	74202002	3414	20.67	291	69.10	86	23000	86	7.10	69	
Midvaal	74202003	5886	25.26	474	62.69	123	12300	148	10.45	93	

# Thank you

1. % of adults receiving social grants
2. % of adults that are economically active
3. Average household income (in Rands)
4. Unemployment rate (% unemployment)
5. % of the area of each ward that is covered by informal housing
6. % of households without access to dwellings suitable by RDP standards
7. % of households without access to drinking water by RDP standards
8. % of households without access to sanitation by RDP standards
9. % of households without access to electricity for lighting by RDP standards
10. % of households without access to electricity for cooking by RDP standards
11. % of dwellings that are further than 5km from a primary health care facility
12. Household density per square kilometre
13. % of households that are female headed
14. % of households that are child headed
15. % of individuals with one or more disabilities
16. % of population aged 0-18 that is further than 3km from a public school
17. % of population aged 7-14 not attending school
18. % of populated areas overlaying dolomite



	Weighting	Source
% of adults receiving social grants	1.0	Lightstone, 2010
% of adults that are economically active (Labour force participation rate)	1.0	Lightstone, 2010
Average household income (in Rands)	1.0	Lightstone, 2010
Unemployment rate (% unemployment)	1.0	Census 2001
% of the area of each ward that is covered by informal housing	1.0	Eskom 2008 & DoHousing
% of individuals with one or more disabilities	1.0	Census 2001
% of households without access to dwellings suitable by RDP standards	1.0	Census 2001
% of populated areas overlaying dolomite	1.0	Eskom 2008 & GDARD
% of households without access to drinking water by RDP standards	1.0	Census 2001
% of households that are female headed	1.0	Census 2001
% of households that are child headed	1.0	Census 2001
% of dwellings that are further than 5km from a primary health care facility	1.0	Eskom 2008 & DoHealth 2011
% of population aged 0-18 that is further than 3km from a public school	1.0	Lightstone 2010 & DoEduc 2011
% of population aged 7-14 not attending school	1.0	Census 2001
% of households without access to sanitation by RDP standards	1.0	Census 2001
% of households without access to electricity for lighting by RDP standards	1.0	Census 2001
% of households without access to electricity for cooking by RDP standards	1.0	Census 2001
Household density per square kilometre	1.0	Lightstone, 2010

Local Municipality	Ward ID	Sources		Lightstone, 2010		Lightstone, 2010		Lightstone, 2010		Census 2001		Eskom 2008	
		Weighting applied (based on priority out of 50)	% of adults receiving social grants	% of adults that are economically active (labour force participation rate)	Average household income (in Rands)	Unemployment rate (% unemployment)	% of the area of each ward that is covered by informal housing	% of individuals with one or more disabilities	% of households without access to dwellings suitable by RDP standards	% of populated areas overlaying dolomite	% of households without access to drinking water by RDP standards	% of households that are female headed	% of households that are child headed
Emfuleni	EC201001	2147	9.14	95	70.04	75	26300	71	5.65	46	-	-	-
Emfuleni	EC201002	4362	17.27	28	21.92	461	2840	426	41.12	262	-	-	-
Emfuleni	EC201003	4320	21.11	28	41.95	259	6300	257	33.40	235	-	-	-
Emfuleni	EC201004	1460	5.63	76	54.76	177	24200	98	1.80	45	-	-	-
Emfuleni	EC201005	712	20.33	276	88.22	89	25600	62	6.09	56	-	-	-
Emfuleni	EC201006	4227	17.53	141	25.50	407	8000	436	53.26	500	-	-	-
Emfuleni	EC201007	5084	20.63	256	29.09	302	4700	366	42.60	207	-	-	-
Emfuleni	EC201008	3074	17.32	144	43.95	271	6000	260	36.79	253	-	-	-
Emfuleni	EC201009	236	25.21	422	59.39	146	9200	121	3.76	85	-	-	-
Emfuleni	EC201010	2397	24.79	464	62.21	125	10300	97	11.00	103	-	-	-
Emfuleni	EC201011	4034	16.76	71	40.33	201	7000	241	33.11	229	-	-	-
Emfuleni	EC201012	3671	20.15	271	34.12	414	2000	442	44.67	264	-	-	-
Emfuleni	EC201013	4271	22.13	363	36.37	355	3700	388	43.29	362	-	-	-
Emfuleni	EC201014	3760	22.56	381	37.20	356	3600	398	42.46	342	-	-	-
Emfuleni	EC201015	3188	24.53	405	59.06	146	8600	198	17.30	145	-	-	-
Emfuleni	EC201016	3656	18.60	394	56.26	369	7600	324	17.46	146	-	-	-
Emfuleni	EC201017	4248	22.79	268	39.76	326	4000	386	49.46	474	-	-	-
Emfuleni	EC201018	5620	16.96	123	29.76	492	1700	434	48.11	402	-	-	-
Emfuleni	EC201019	4157	19.21	231	23.17	423	2600	458	42.21	236	-	-	-
Emfuleni	EC201020	3236	19.70	225	33.47	423	2500	464	37.13	269	-	-	-
Emfuleni	EC201021	3548	16.74	116	43.95	235	6000	270	16.20	107	-	-	-
Emfuleni	EC201022	1962	18.12	173	31.86	462	3000	436	48.13	263	-	-	-
Emfuleni	EC201023	4578	18.99	270	39.03	307	5400	262	40.34	235	-	-	-
Emfuleni	EC201024	4480	19.96	246	23.23	426	2200	477	49.67	440	-	-	-
Emfuleni	EC201025	5529	22.29	376	44.46	271	6400	254	31.47	235	-	-	-
Emfuleni	EC201026	4226	19.29	293	30.68	474	8000	450	51.07	432	-	-	-
Emfuleni	EC201027	4420	22.29	227	22.29	446	446	446	45.62	268	-	-	-